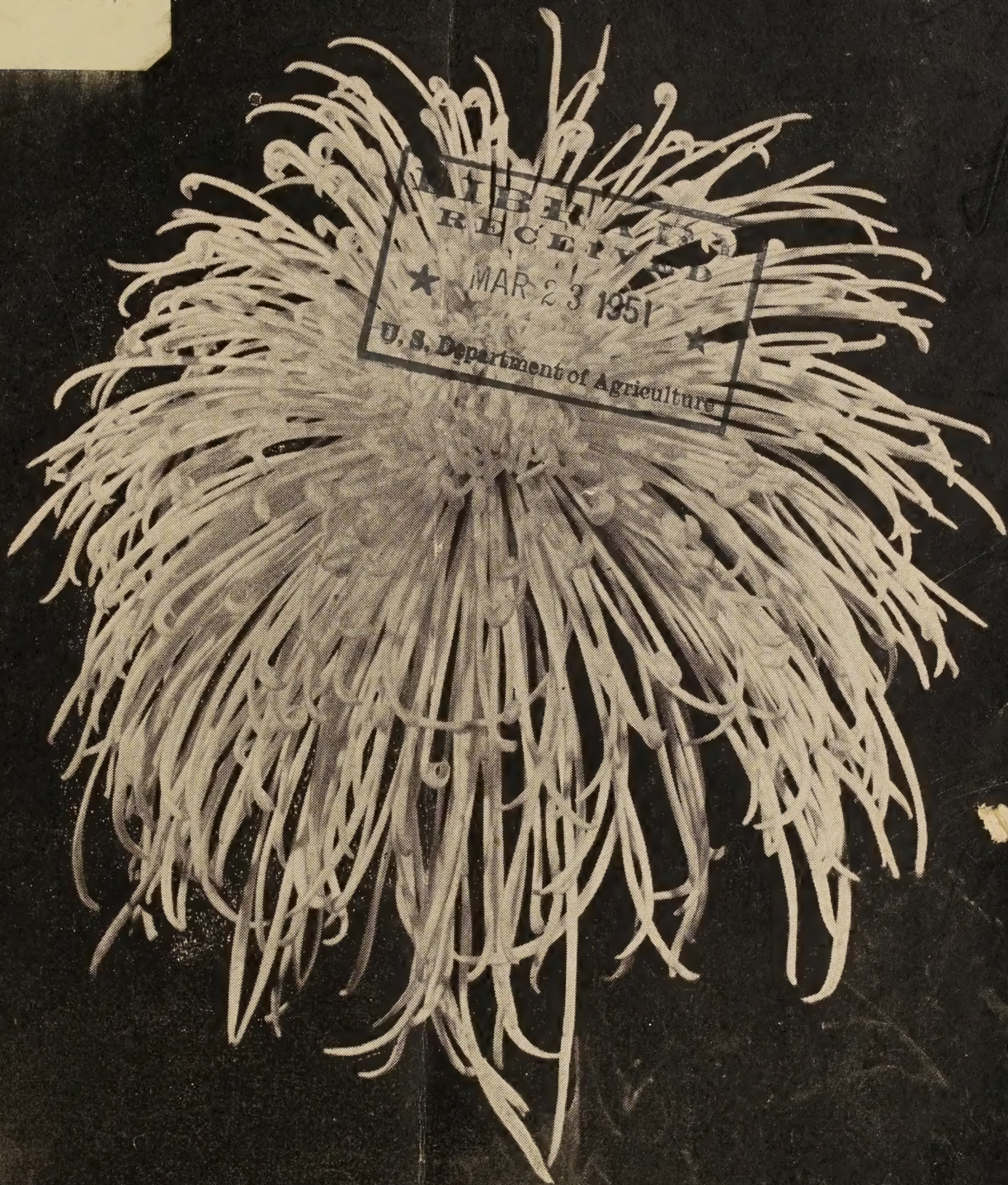


Historic, Archive Document

Do not assume content reflects current scientific knowledge, policies, or practices.

Ch
62.29



QUEENS LACE

—Courtesy Geo. J. Ball, Inc.

Shoemaker's

Chrysanthemum
and Iris Gardens

8134 W. 78th St.

H. E. 0968

OVERLAND PARK, KANSAS

1951

GREETINGS FOR 1951

A new year and a new list of lovely flowers including many new introductions. We endeavor to sell flowers to cover the complete season so you may have bloom in your garden at all times during the growing season.

We have added a new hybridizer to our list. Mr. Becker is surely making a name in mums. We still list the new introductions of Bristol, Dr. Kraus, Lehman and Yoder Bros., so you should have no trouble finding mums suitable for your gardens or for that fall show that you are planning to win blue ribbons with your entries.

Do you realize that the new flower that is taking the country by storm (The Hemerocallis or Daylily) will never take the place of the IRIS that blooms in the spring or the CHRYSANTHEMUM that blooms in the fall, but will take its own place in the garden to fill in that much needed bloom through the summer months when bloom is so badly needed.

We have listed an extensive list of the SIBERIANS that are coming back into popularity, especially for the shows. Some are new and some are rare collector's items.

The Japanese or Iris Kaempheri were a sight to behold in our gardens last fall and customers and visitors could not resist placing orders for fall delivery. We have since added many new varieties but in fairness to our customers we are listing the requirements of these beautiful flowers. They must never be planted near a sidewalk, driveway, foundation or wall that would allow lime to leach into the beds. They are strictly an acid plant and lime is fatal. They must never be allowed to dry out from early spring to blooming time and then they go dormant and water can be withheld.

We thank all of you for your past patronage and feel that if we can help you in any way on your cultural problems, please let us know.

Our Mums are rooted cuttings, soil grown for a time before shipment. We still treat them with BLACK GOLD for better plants.

Be sure to read our liberal cash discount at the back of catalogue.

Yours for better flowers,

HARRY AND OPHELIA SHOEMAKER.

NEWEST VARIETIES OF ENGLISH CHRYSANTHEMUMS

All the mums listed below were imported from a prominent nursery in England. This nursery specializes in raising mums for the Florist's trade and his standards are so high a plant must produce from ten to twelve ideal blooms of the highest quality, or be discarded. The pictures in this catalogue are actual pictures taken of his stock. He has been very considerate in releasing this stock for the American Public and we sincerely hope that all our customers are as successful raising these lovely mums as the nurseryman who released them to us.

AMBER VALE—A lovely, well shaped flower of bright amber with excellent stems and foliage. Sept.-Oct. Each \$1.00

APRICOT SWEETHEART—The color of this sport from Sweetheart is a true apricot. Large flowers when disbudded. Sept. ----- Each \$1.50

AUGUST PINK (Selected Stock)—This deep pink selection of August Pink is far superior to the older August Pink. Lovely flowers on good stems. Ideal for cutting. Blooms Sept. ----- Each \$1.00

BALCOMBE BRILLIANCE — Brilliant red flowers of very good quality. A vigorous grower and free flowering. Sept.-Oct. ----- Each \$1.00

BETTY RILEY—A very large, reflexing bloom of great beauty. A lovely art shade of carnation-pink which deepens toward center of flower. Sept.-Oct. ----- Each \$1.00

BRONZE AMBER VALE—Well shaped flowers of rich bronze on straight stems with medium foliage. This is new and will become popular. Sept.-Oct. ----- Each \$1.50

CAROL—A very deep rose-pink with a charming gold reverse. A good variety for early Sept. and easily disbudded. Large flowers. Sept. ----- Each \$1.00

CHAS. E. MORRIS—A beautiful clear yellow. Extra large flowers with broad petals, slightly reflexed. A good show variety. Very prolific. Sept.-Oct. ----- Each \$1.00

COTSWOLD GEM—Pure white flowers opening in early Sept. We especially recommend this as the first early white. Ideal for disbudding or as a spray variety. Sept. ----- Each \$1.00

FALAISE—The nearest to scarlet that we have in the Earlies. Good flowers, good stems and a good crop of flower in Sept. This variety really does hold its color well. Sept. ----- Each \$1.50

GOLDEN SWEETHEART—As the name suggests, a flower of pure gold, not yellow, a very welcome addition to the Sweetheart family. Sept. ----- Each \$1.00

IMPERIAL YELLOW—A rich, glistening yellow with a pleasing green center. Reflexing blooms are up to 6 inches across. Healthy clean grower with a good crop of flowers. Received the F. C. C. at Wisley. Sept.-Oct. Each \$1.00

JOYCE—A warm shade of rosy salmon-pink. Very large reflexing blooms, broad shouldered, firm and full. Healthy grower, very floriferous. Exhibition variety. Sept.-Oct. ----- Each \$1.00

MARY MONA—A lovely salmon-cerise with gold center. Flowers large and very free flowering. Received F. F. C. at Wisley. Sept.-Oct. ----- Each \$1.00

ORANGE SWEETHEART — A true orange sport of Salmon Sweetheart. A strong grower like its parent and just as free flowering. Sept. ----- Each \$1.00

PEACH SWEETHEART—Another very new Sweetheart. Can best be described as a very pale Edgerton Sweetheart. Strong grower and free flowering. Sept. ----- Each \$1.00

PRIMROSE BARBARA — A lovely 6 inch flower of pale primrose-yellow. Reflex on outer edges and incurved center. More weather resistant than Barbara, its parent producing ten to twelve blooms per plant. Healthy grower with ideal stems and small foliage. Ideal for exhibition. Sept.-Oct. ----- Each \$1.25

RED FLARE—A large, very bright red that keeps well when cut. This is a most welcome addition to the red class. Very floriferous. P. S. Stock so scarce we had to beg for this one. Sept.-Oct. ----- Each \$1.50

RONALD—A good solid flower of rich ruby. A lovely flower in this color class and produces well. Good stems. Sept.-Oct. ----- Each \$1.00

SAMARKAND—So very new and so popular in England that we are compelled to charge accordingly. Ten or twelve very large reflexed flowers, of very bright rich bronze on good strong stems. A good healthy cropper that stands the weather well. Sept.-Oct. ----- Each \$2.00

SPARKLER—A sparkling red as the name given this lovely flower. Good cropper with ideal stems for cutting. Sept.-Oct. ----- Each \$1.00

SUNBEAM—A large, lovely bright yellow that is in big demand in the cut flower market in England. Good grower and prolific. Sept.-Oct. Each \$1.00

NEWER VARIETIES OF ENGLISH CHRYSANTHEMUMS

We have been sending to England and to Canada the last two years for many new varieties of these beautiful English Chrysanthemums. Although our stock is still limited on many of these we hope we will have enough.

ALFRETON IVORY—A beautiful ivory of largest size, broad and deep with strong, broad petals. Weatherproof and outstanding for exhibition. An early bloomer ----- Each \$1.00

BRONZE SWEETHEART—One of the best of the Sweetheart family. A rich bronze with gold reverse. An early bloomer. ----- Each \$0.75

CHRISTINE SWEETHEART—A bright cherry-red with all the Sweetheart qualities. An early bloomer. ----- Each \$0.75

DELIA — An immense reflexed rose-pink flower with broad petals of wonderful texture. Truly an exhibition variety. ----- Each \$0.50

EDGERTON SWEETHEART — Very beautiful salmon-bronze Sweetheart. An early bloomer. ----- Each \$0.50

EMPIRE WHITE—A first class incurved white of great beauty and refinement, splendid upright habit, fine for cutting. ----- Each \$0.50

FONDANT—Incurved flowers of deep rose pink. Very prolific. An early bloomer. ----- Each \$0.75

GLORIOUS—Large, loosely incurving flowers of beautiful clear pink with a silvery reverse. A midseason bloomer. ----- Each \$0.75

GOLDEN HARVEST—A fine, all-round variety and suitable for any purpose. Produces up to twelve golden-yellow blooms per plant. A midseason bloomer. ----- Each \$0.75

INC. ALFRETON BEAUTY—A sport of Alfreton Beauty (but a darker shade of bronze). Attractive compact flowers. An early bloomer. ----- Each \$0.75

INCURVED ZENITH—A rich purple-maroon sport from the very popular Zenith. An early bloomer. Each \$1.00

LADY BOWER—One of the best. A clear, bright pink recommended for cut flower trade. A midseason bloomer. ----- Each \$1.00

TORNADO — Medium sized reflexed flowers of brilliant red on long rigid stems. Good grower with small foliage. Oct. ----- Each \$1.00

YELLOW BARBARA—One of the very best large flowered yellows. Stands the weather well. Truly an exhibition of merit. Very new in England and unknown here. Sept.-Oct. ----- Each \$1.50

MAYFORD PINK—Said to be the largest ever raised. An excellent exhibition variety in every way having large, full flowers of bright rose-pink with gold centers and long, spiky petals. A mid-season bloomer ----- Each \$1.00

MILLER'S DALE—Said to be the whitest of all the whites. An excellent grower and stands the weather well. A mid-season bloomer. ----- Each \$1.00

PEARL SWEETHEART—A pearl beauty of the Sweetheart family. An early bloomer. ----- Each \$0.75

PERFECTION — Very large, shapely blooms with hard petals slightly incurved. An exhibition flower of lovely cream on strong stems. A midseason bloomer ----- Each \$0.75

PRIMROSE EMPIRE—A beautiful primrose sport from Empire White. A real gem and most popular. A midseason bloomer. ----- Each \$1.00

RED McLEOD—A sport of bronze McLeod, a very useful show variety. An early bloomer. ----- Each \$0.75

RED SWEETHEART—An excellent reddish-bronze of the Sweetheart family. An early bloomer. ----- Each \$0.50

SALMON SWEETHEART—A large sized salmon flower of the Sweetheart family. An early bloomer. ----- Each \$0.75

SWEETHEART—The mother of all the famous Sweethearts. Rose-pink, reverse tinged with bronze. Very pretty and quite early to flower. ----- Each \$0.50

YELLOW SNOWDONIA—A very fine incurved golden yellow, best disbudded. Late Sept. ----- Each \$0.50

WARSPRITE—A rich golden yellow, semi-inc. Late Sept. ----- Each \$0.50

WINIFRED—Very large warm salmon reflex flowers on strong stems. Flowers up to 6 inches across. An early bloomer. ----- Each \$0.75



Chrysanthemum SWEETHEART as grown by Mr. Stevenson in England.

INTRODUCING THE 1951 CHRYSANTHEMUMS

AZTEC GOLD—Kraus—Large, frost resistant, clear, lemon-yellow. Fine border plant. Blooms Oct 1st. **Each \$0.75**

CANARY WONDER—Bristol 1951—Like all the Wonders, a 2 ft. bush of perfect 1½ in. balls of pleasing canary-yellow primrose. Blooms Sept. -- **Each \$1.00**

EARLY ROBIN—Becker—A very early compact mound completely smothered with two toned flowers of bronzy-yellow with distinct mahogany-red centers. Hgt. 15 in. Sept. 10th. ---- **Each \$0.50**

FLAXEN BEAUTY—Bristol 1951—An English hybrid of Pale Moon. A lovely blend of peach, yellow and coral. Each 4 in. flower delicately flushed with gold in the centers. A real beauty from Bristol. Hgt. 2 ft. Blooms October 1st. ----- **Each \$1.00**

GARNET SPOON—Lehman 1951—Excellent red spoons with purple tubes set off by a pure yellow center. Blooms Oct. 4th. ----- **Each \$0.75**

GLADWIN—Becker—Very large light pinkbuds opening a blush white with a slight yellow tinge, 4 in. flowers with very long, fluffy petals. Blooms Sept. 20th. ----- **Each \$0.50**

GOLDEN GOPHER—D. Kraus 1951—Deep cadmium-orange, aging to light buttercup-yellow. Frost hardy. New shade to brighten the garden. Blooms Sept. 20th.

GOLDEN WAND — Becker — A very hardy October blooming golden-yellow mound. Foliage completely hidden by bloom that remains showy after a heavy frost. Hgt. 15 in. Oct. 5th. **Each \$0.50**

LEE POWELL—D. Kraus 1951—Large, impressive flowers of Chinese-yellow to orange-yellow at center. Prolific. "Lehman's Mum of the year." Blooms Sept. 23rd. ----- **Each \$1.00**

LUCKY THIRTEEN—Becker 1951—This new golden-yellow, ball shaped flower is one that really stands out in the fall display of Mums. One of the healthiest and most vigorous bush-type pompons on the market today. Hgt. 20 in. Sept. 15th. ----- **Each \$0.50**

MING—D. Kraus 1951—Clear Chinese-yellow to tangerine-orange. Firm texture. Likened to a glorified calendula. Blooms Sept. 18th. ----- **Each \$0.75**

MY LOVE—Becker 1951—A true break in color. This Mum will most assuredly bloom its way into your hear. A 3 in. white pompon with the edges deeply trimmed in red-purple that matures to an old rose that lends an enchanting beauty to this lovely flower. A 30 in. plant with pleasing foliage. Blooms October 5th. ----- **Each \$0.50**

PINK OPAL — D. Kraus 1951 — Pale Persian-rose overlaid with cream and pale-green tints toward center. Distinct, clear. Blooms Sept. 28th. -- **Each \$0.75**

QUEENS LACE—YB 1950—A new, very large, pure white spider that will win in any show. The Laces are truly an exhibition spider. Blooms November 1st. ----- **Each \$0.50**

ROBINHUE—Y 1951—A very double, large red, decorative pompon. A very good show type. Blooms October 15th. ----- **Each \$0.50**

ROUGE CUSHION—S. D. Lehman 1951—A gorgeous, brilliant bright red early cushion. Blooms Sept. 20th. **Each \$0.50**

TANGO—Becker 1951—Imagine a lovely 24 in. well branched plant with dark green foliage, loaded with bronze-gold, ball shaped pompons from August to freezing weather and you have a picture of this beautiful Mum. Inheriting the beauty and frost resistance of Mme. Chiang Ka Shek and F. F. Rockwell, the parents. ----- **Each \$0.50**

YELLOW ALABASTER—Wierenga 1951—A very lovely soft yellow sport of that lovely English Alabaster, 5 in. flowers just like its white component. Bloom Sept. 15th. ----- **Each \$0.50**

YELLOW LACE—YB 1951—A lovely yellow sport of Queens Lace and just as breath-taking. Plant to exhibit both of these this fall. Blooms November 1st. ----- **Each \$0.50**

HARDY ENGLISH CHRYSANTHEMUMS

Perhaps by this time most of you have tried these Hardy English Chrysanthemums and know how good they are. We are offering the following varieties at reasonable price. All English Mums listed at 40c each except those marked.

ALABASTER—A very early white of large size and good substance. Slightly incurved and will grow 5 inches across when disbudded. Sept.

BALCOMBE GLORY—A very large incurve of deep rich yellow. A really fine variety. ----- Each \$0.75

BRIDESMAID—Delicate blush pink suffused salmon. Large reflexing flowers that are lovely. Sept.

BRONZE EARLY BUTTERCUP—Rich deep bronze with golden reverse. A fine incurved variety. Best disbudded. A very popular variety. Sept.

BRONZE McLEOD—A fine large incurved bronze sport of George McLeod. Very lovely disbudded. Sept.-Oct.

BRONZE PYRAMID—Large flowers of an attractive orange-bronze shade. Tall, wiry stems. Sept.

CERISE—Sharply pointed, quilled petaled, rosy-cerise. Oct. 10. 24 in.

COLSAR—Deep rose-pink that blooms in October. Very nice variety and should disbud well. ----- Each \$0.50

CONQUEROR—A flashy, rich crimson flower which does not easily fade. Grows tall and straight. Has good foliage and stiff-necked stems. A valuable addition to any garden. Med. hgt. Mat. early Oct. ----- Each \$0.50

COPPELIA—A fully double, brilliant red blossom of an extremely early habit of bloom. Yields large clusters of perfect 2½-inch flowers of good keeping quality. Has good foliage and erect stems. Med. hgt. Mat. Oct. 5th.

CREAM DUCHESS—Cream shading to lemon in the center of the bloom. Fine for exhibition of cut flowers. Sept. ----- Each \$0.50

CYDONIA—Medium size bright salmon-pink. Very stiff stems and very prolific spray variety. Sept. ----- Each \$0.50

DICTATOR—Bronze-scarlet with gold tips. Early blooming. Aug. Each \$0.50

DUKE OF WINDSOR—Exquisite shade of pure lavender. A large, perfectly formed incurve on 2 ft. stems. Blooms Oct. 15th. ----- Each \$0.65

EDALE—Splendid variety, is a beautiful salmon florlets, blooms large and extra full. Sept. ----- Each \$0.75

FORWARD—This beautiful fluorescent bloom is an exquisite shade of delicate silvery pink. Difficult to describe, but when disbudded will grow from five to six inches in diameter. Med. hgt. Mat. Sept. 15. ----- Each \$0.50

FORTUNE—A grand white of excellent quality, with long stems and incurving petals. Its wide petals make it a grand flower for show or cutting. September. ----- Each \$0.50

FREDA—Bright silvery mauve-pink. A beautiful flower of fine substance. Oct. 4th.

FREDA PEARCE—Soft rose-pink, center suffused with yellow and gold. Very large, reflexed flowers. Sept. Each \$0.50

GEO. McLEOD—An outstanding deep golden-yellow incurve, excellent for cutting. Blooms Sept.

GOLD STANDARD—A large deep yellow with flat broad petals. Stands up well in wind and rain. Med. hgt. Mat. early Oct.

JOAN FELLOWS—A very large, outstanding flower of rosy-cerise. A grand grower and excellent for exhibition. Blooms Sept. ----- Each \$0.50

LEDA—Immense heliotrope-pink incurve with rolled and pointed petals. Oct. 1.

MARION PARK—A lovely light pink, good sized flowers. Cut flower variety and heavy bloomer. Blooms September. ----- Each \$0.50

MERIDAN—Salmon rose of unparalleled beauty. Has wide, pointed petals slightly reflexed. When disbudded is very large. Med. hgt. Mat. Oct.

MOVOUREEN—Lovely lilac-pink, full robust flowers. Will attain 6 in. when disbudded. Blooms Sept. -- Each \$0.50

MRS. J. H. MILNER—This exhibition pure white bloom is one of the largest of its type. Will attain a size of 7 inches under proper conditions. Med. hgt. Oct. 1st.

MRS. J. PEARSON—Probably the earliest and finest bronze for cut flowers. Blooms late Aug. and Sept. **Each \$0.50**

MRS. T. GUTHRIE—A very large, bright chestnut red with a bronzy reverse. Although this variety may be grown in sprays, it is far more impressive in appearance when it is disbudded. Hgt. 3 ft. Mat. late Sept. and early Oct.

MRS. T. RILEY—A snow white reflex of unparalleled purity. Has wide, flat petals with sharply tapered points. Produces full bodied blooms 8 inches in diameter when disbudded. Med. hgt. Mat. Oct. 5th. **Each \$0.50**

MRS. PATTIE—A large incurving variety of terra cotta red with a gold reverse. The charm of exotic coloring is not lost in the disbudded flower or unpampered spray. Hgt. 3½ ft. Mat. Sept. and Oct.

ORANGE GLOW—Orange bronze incurve with gold reverse. Sept. 20. 2 in.

QUEENIE—A very fine, pure white. Long stiff stems with large flowers and small foliage. Responds to disbudding. Blooms Sept. **Each 50c**

RADIO—A nice large incurved flower of golden-amber with deeper shading. Blooms Sept. **Each \$0.50**

R. A. ROOTS—A large deep flower of glistening white, appealing twisted petals. Blooms Oct. **Each \$0.50**

RUBY—Nice, large ruby-red flowers. Can be disbudded or grown in sprays. Blooms Sept. **Each \$0.50**

SERENUS—A real variety. An extra large white, on long stems, and very prolific. An award winner in the flower shows of England and used in the Florist trade in London. Blooms Sept. **Each \$0.50**

TOLCROSS PINK—A large rose-pink of good form and substance. Blooms Oct.

TIBSHELF GLORY—Very large flowers of bright orange. Stiff stems for cutting. Blooms Sept.

VANITY—A pleasing color that is greatly admired. Best described as crushed strawberry, shaded cream. Very large blooms, perfect stem and foliage. Excellent exhibition variety. Blooms early Oct. **Each \$0.50**

WHITE BLANCHE DUPONT—An immense, pure white. One of the loveliest whites grown today. Sept.-Oct. **Each \$0.50**

WHITE SPLENDOR—An extra early, incurved white of very large size and excellent form. Can be disbudded. Blooms Sept. **Each \$0.75**

WOKING BRONZE—A very large incurve of pleasing orange-bronze. An exhibition variety. Excellent for cutting with good stiff stems. Blooms Sept. **Each \$0.50**

YELLOW ALABASTER—New 1951—Sport of Alabaster. See 1951 introductions.

HARDY CHRYSANTHEMUMS

All mums in general listing except those especially priced will be **Each 40c**. Heights are marked—S-Short; M-Medium; T-Tall. Type of blooms are marked—S-Single; SD-Semi-double; D-Double. For your convenience, our mums are listed according to the month they bloom.

MUMS BLOOMING IN AUGUST

BUTTERBALL D (Longley)—The best early yellow to date. **S**

DARK RED GOLD D (Lehman) — A pleasing dark ruby bud sport of Red Gold. **M**

GLADNESS—Fully double, clear china-rose, very free flowering, dwarf plant and one of the first to bloom. Blooms August 28th. **Each \$0.50**

GLACIER D (Longley)—An early pure white dwarf. **S**

HARTINGER D (Kraus)—A very lovely bronze. **M**

JOHN HELEN SD—Sparkling garnet-lake, shading to purple with gold center. **M**

MAROON N' GOLD D (Longley) — A bright mahogany, shaded maroon with a gold reverse. **S**

PEARL PARKINSON—(New 1950)—Compact deep evergreen foliage plant of upright growth. Large 3 to 4-inch whorled flower in clusters on good stem for cutting. Blooms early August until frost. Changeable color from golden-yellow flushed red to brilliant red with yellow shadings. Has merit for Great Plains north and possibly east and south as a new bicolor everblooming mum. **Each \$0.50**

PONCA—(New 1950)—Vigorous tall upright grower, good dark green foliage. The attractive and most unusual full double deep purple-red pompon flowers are borne on stems suitable for cutting in clusters up to 30 blossoms. Blooms from late August to hard freezing. A truly frost resistant type mum for general adaptation. ----- Each \$0.50

RED GOLD D (Longley)—A lovely plant loaded with red and orange-gold poms. S

VIOLET D (Longley)—Large dahlia like blooms of very good substance. The centers are a shade darker giving the plant a two toned purple effect. M

MUMS BLOOMING IN SEPTEMBER

ALERT—Becker—Large, fully double, 3 in. dark purple flowers that do not fade. Sturdy stems, ideal for cutting. A hit in our display beds. Hgt. 22 in. Sept. 20th. ----- Each \$0.50

ALGONQUIN D—A very brilliant yellow on stocky plants. M

APRICOT GLOW D (Bristol)—Cushion type, rich apricot-bronze. S

AVALANCHE D (Dreer)—The world's best large creamy white. M

BETTY D (C-P)—The nation's favorite salmon-pink. T

BURGUNDY D (Cummings)—Perfect, glowing wine red. T

CHRIS COLUMBUS D (Rosebud)—New outstanding ivory-white. Excellent for cutting.

CHAS. NYE D (Kraus)—Favorite golden-yellow pompon. T

CHIQUITA D (Kraus)—Canary-yellow button pompon. M

CHIPPEWA D (Longley)—A large aster-purple. None like it. M

COURAGEOUS D (Kraus)—A beautiful dark ruby red with 3½ inch blooms. T

CODY—New outstanding orchid white centered cushion mum.

DAHLIA MUM D—A wine-red, quilled petale, cactus type of mum. S

EARLY GOLD—Bright golden-yellow pompon with dark green foliage. An excellent border plant. Blooms Sept. 12th. ----- Each \$0.50

EARLY WONDER D—A soft pink pompon of good quality. T

EARLY ROBIN—Becker—See 1951 introductions.

FAIRBOW—A heavy blooming, upright growing, lavender-pink pompon. Blooms September 4th. ----- Each \$0.50

GALE S—A beautiful windblown peach bronze. Grows to 2 feet and blooms with the early group.

GLOWING COALS D (Kraus)—A bright cherry-red. M

GOLDEN CARPET D (Bristol, '49)—A new golden-yellow spreader. S

GOLDEN HOURS D (Kraus)—A deep lemon-chrome with broad petals. M

GOLDEN MOUND—Excellent golden-yellow cushion. Gobs of 2 inch flowers on short, dark green, twiggy branches. Blooms Sept. 12th.

HOPPERT—New vari-color from clear yellow to buff bronze, 3 to 5 inch flowers in clusters on wiry stem.

IVORY GLOW D—New comer to the white ranks. Lovely 3 inch blooms of ivory white.

JAYEFF D (J. M.)—4 inch flowers with a dazzling sheen of positive pink. A prolific bloomer and hardy. M

KARLE A. REICHE D (Bristol) — A blend of old rose, red-mauve and ripe strawberry shades. M

KATHLEEN LEHMAN — Brightest orange-gold, deepening to red-gold at the centers. Blooms Sept. 28. Each \$0.75

MAJOR CUSHION—Bright salmon pink, habit and character superb, flowers firmly petaled.

MISS LACE—Pert and saucy, this is the glamour of the new group. True Grandmothers light pink, fully double, 3 inch blooms, en-masse atop stately upright stems, 2½ feet, early September.

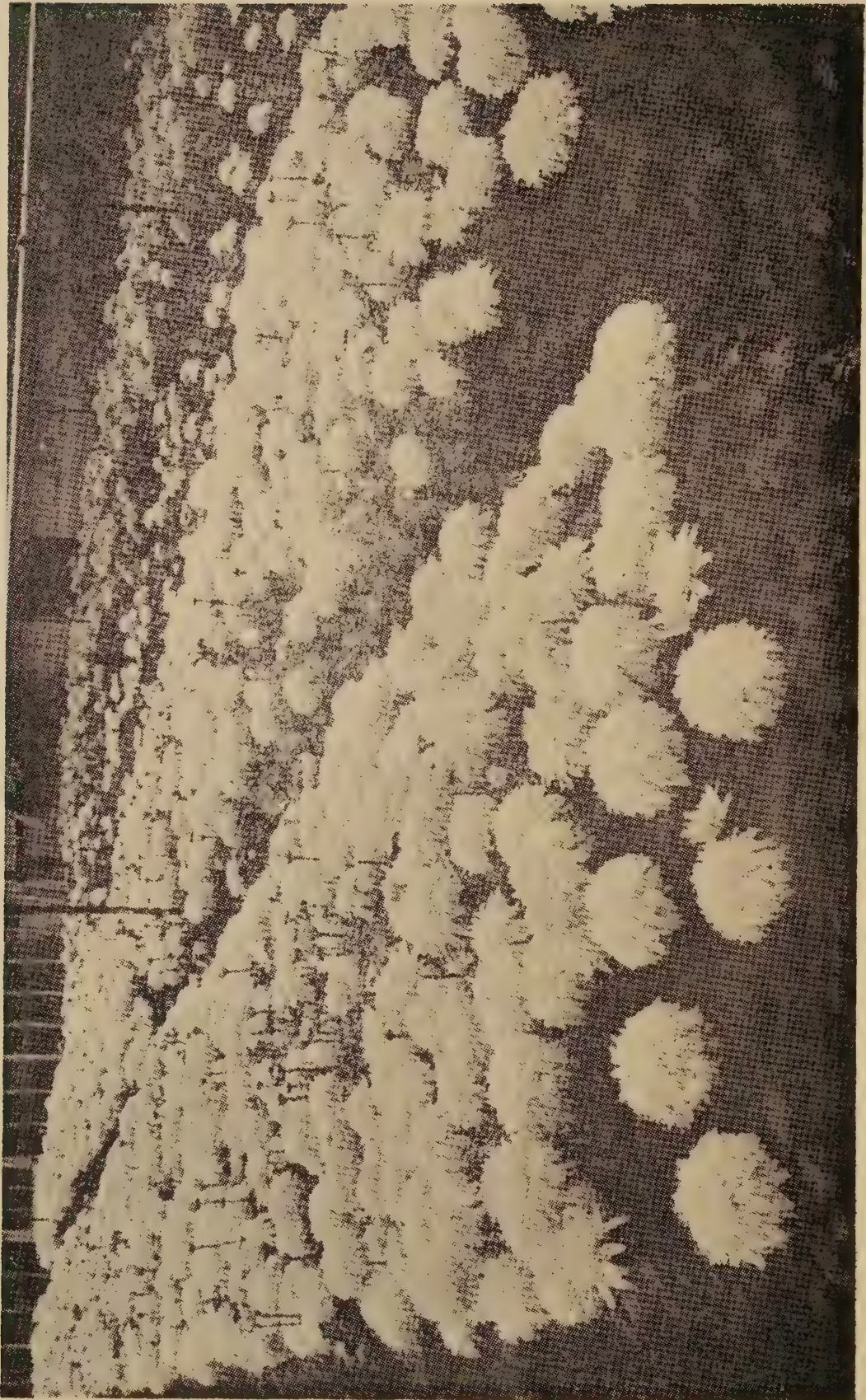
MURMURS D (Kraus)—Opens amaranth-pink, fading slowly to clear mallow-purple. Petals broad and incurved. Early. M

OMAHA—A new quilled petaled orange cushion, like a cactus dahlia. Blooms from late Sept. to hard freezing weather.

OLIVE LONGLAND D (Kraus)—3 inch blooms of apricot toned salmon-pink. M

ORCHID HELEN D (Becker '49)—Sturdy orchid-pink of unusual beauty. M

PAPER WHITE—A pure white excellent textured double bloom on a dwarf plant. Blooms Sept. 10th. ----- Each \$0.50



Chrysanthemum SERENUS as grown by Mr. Stevenson in England.

PATRICIA LEHMAN—A sparkling geranium-pink with peach center. Recurved and twisted petals give a feathery effect. An upright grower. Blooms Sept. 28th. ----- Each \$0.50

PINK PRINCESS D (Peck) — Dainty baby-pink button of strong upright habit. M

PEPITA D (Kraus)—Densely quilled button pompon of egg shell-White. M

POWDER PUFF D (Bristol '49)—True gleaming white cushion. S

REDCOAT—As hardy as the men it pays tribute and as brilliant as the uniforms they wear. A strong grower, really new red, fully double. Flowers in profusion on strong succulent eighteen inch stem. Early.

REMEMBRANCE—Deep ruby-carmine color that is retained for the life of the flower. Finest red to date. Blooms Sept. 27th. ----- Each \$0.50

ROSITA D (Kraus)—Light Persian-rose button type pompon. M

SEPT. BRONZE D (Cummings)—A golden-bronze cushion type pompon. S

SEPT. CHEER D—A good cherry-red

SEPT. DAWN D—Large, bright rose-pink. M

SINCERITY—A sport of Lavender Lady. Like its parent, with fully double 3 inch blooms on 30 inch plant, faintly lavender at first but soon becomes pure white with a pearly cast. Blooms in late Sept. ----- Each \$0.50

W. P. SNYDER—Everblooming apricot-orange. Sept. to hard freeze.

SUNBEAM—A new cushion type pompon, a mound of buttercup yellow flowers practically cover the foliage, 12 inches, mid-Sept.

SUNBURST D (DeWalt)—Shaggy, golden-yellow blooms. Outstanding. M

TAMPICO (U. S. D. A.—A high crested double bronze with long stems, making it superb for cutting. Flowers group in a close cluster right at the top. Foliage is clean and green, blooms early.

TERRY SD—Bright golden yellow cut flower.

TANGERINE D (Kraus)—A brilliant Spanish-orange. M

YOUNDATH'S WHITE D (Youndath)—A very fine early white.

WAKU—A firm, low growing pure white that fits the need for a border or extreme floriferousness.

WHITE TOWER—Tall, creamy white pompon, aging to pure white. Sturdy. T

MUMS BLOOMING IN OCTOBER

ALLEGRO D (DePetris) — Glowing shrimp-pink with a coppery sheen. M

AMBER GLOW D (Youndath)—A brilliant rosy-bronze. S

ANN—Compact free flowering double white.

ARGONNE D (DePetris)—A fully rounded button type pompon of very rich amaranth purple. (1949). M

AVIATOR D (DePetris)—A very good coppery-red. M

BEACON D (Kraus)—Coral-apricot to flaming nasturtium-orange at center. A tall plant with large blooms. Excellent cut flower. T ----- Each \$0.50

CALIPH D (Bristol)—A nice crimson-red of good substance. T

CARNIVAL D (Bristol)—Large blooms of burnt orange blend that gleams. T

COCHECO—A lavender pink, low growing mum, with free blooming habits.

CUTIE D—An unusual cherry red button. (New). M ----- Each \$0.50

CYDONIA D—Brilliant orange-chestnut overlaid mahogany. T

DAWN ROSE D (Kraus)—Flower is grenadine to bittersweet-pink, lightening to bright flesh color at the margins. (1949). M ----- Each \$0.50

DRAGON LADY—A new mum color, a satin smooth Chinese Red. Mature flowers develop spoon tips. M

DWARF JEWEL D—A lovely dark pink. Slightly taller than cushions. M

- EMBER D** (Bristol)—Very large coral-red blooms and hardy. T
- ERMALINDA D**—A lavender-pink button type pompon.
- GOBLIN D** (Bristol)—Fine free flowering Halloween bronze. M
- GRIZZLEY D** (DeWalt)—3 inch creamy white incurved blooms. M
- HUNTSMAN D** (Bristol)—Vivid scarlet-orange overcast with walnut-bronze. Lovely 3 inch blooms. Very prolific and hardy. (1949). M ----- **Each \$0.50**
- IDA BREWSTER**—Large brilliant crimson flowers with a yellow center, semi-double, 3 feet, strong, never leans, Oct. 1.
- INSPIRATION D** (Kraus) — Large orange-red overlaid with apricot-orange. T
- JEWELRY D**—A button type, rosy-red pompon. M
- JILL D** (DeWalt) — 1 inch lavender blooms on upright plant.
- JUDITH ANDERSON D** (Bristol)—Masses of golden-yellow buttons. T
- KETTLER RED**—The best large dark red to date. An excellent grower and stands the weather well. M
- LAVENDER LADY D** (Bristol)—The only 3 inch true lavender. Very hardy. T
- LITTLE RED BOB D**—Tiny, yellow centered bright red blooms. S
- MAGNIFICENT D** (Kraus)—4 inch flowers of plum-red to rosy cardinal. M
----- **Each \$0.50**
- MAROONETTE**—Super hardy, upright grower with compactly double flowers of an intense maroon. 24 inches, foliage clean deep green.
- MASQUERADE**—A much hardier hybrid of the old favorite Jewel. A rounded 2 foot mass of 1 inch balls of silvery-rose with darker centers. Glistens in the October sun, appearing almost deep lavender. ----- **Each \$0.50**
- MELLOW GLOW D** (Cumming) — A lovely blend of orange-buff, peach-pink, and bronze tints. Very good for cutting. T
- MOONBEAMS**—3½ inch, fully double, beauties of soft primrose-yellow in huge sprays on 2½ ft. plants. A must for those who enjoy delicate shades. Destined to replace Pale Moon. Blooms October 1st. ----- **Each \$0.50**
- MRS. P. S. DUPONT D** (Cummings)—A peach-pink blended with rosy-bronze and a salmon cast over all. A very popular mum that is here to stay. M
- NABOB D** (J. M.)—A rich, exotic soft purple with a metallic sheen. Dark green foliage and a wealth of bloom. M
- ORIENTAL GLORY D** (Rosebud)—Brilliant Oriental-red, large flowers with pointed petals. Good cut flower. M
- POLAR ICE**—Clear ice-white, large, double blooms from early September on. Plants are very free-flowering. M
- PURPLE CARPET**—Spreading mass of deep purple. Prolific bloomer and hardy.
- RED VELVET D** (Bristol)—That always popular deep velvety red. M
- SAM P. ROTAN D**—A large yellow incurve with a tan cast over all. M
- SYMPHONY D** (Bristol)—Mauve and coppery-pink. Large blooms. M
- TERRY SD**—Bright golden yellow cut flower. M
- VALIANT SD** (Kraus)—A gaudy flower with long petals of bright rose-scarlet with a clear yellow center. M
- WINTERSET D** (Peck)—Strong-growing, large snow-white. A valuable addition, as it blooms with Mrs. du Pont and Red Velvet. T

ODD VARIETIES AND INTERESTING FORMS

All in this list 40c each unless otherwise priced.

- BESS WITT**—It would be difficult to say too much for this outstanding early spider mum. Duo-toned coloring, shading from salmon to bronze. A very excellent cut flower here in the open field. Oct. 10th.
- CATHAY**—The quilled petals of this lovely Spider is a lovely shade of old copper in color with brilliant red spoon tips curving slightly inward. The regularly spaced petals expand outward instead of drooping. Has lovely foliage and good stem. Height, medium. November 1st. ----- Each \$0.50
- GARNET SPOON**—See New Introductions.
- GEORGINA HEDINGER**—This very full centered Spidery variety in pink ranks high among the early flowering varieties. Very graceful and distinctive in all respects. Height, medium. Oct. 1.
- GRACE**—Exceedingly beautiful yellow Spoon. Oct. 15.
- KAY TASHIMA**—Huge white spider mum. Oct. 25. 24 inch.
- KRISTINA S** — Lovely rose colored single. A Northland Daisy. M
- LILAC SPOON S** (Lehman) — Large, wide-petaled flowers of lilac-pink with silvery white tubes.
- LOVELINESS**—An outstanding carmine-pink spoon. Blooms Oct. 1.
- MAGENTA SPOON**—A lovely magenta-rose. Blooms Oct. 3. M
- MAMORU**—Dark orange in color, shading into bronze toward center. Excellent cut flower Spider for it is of good keeping quality with strong stem and lovely foliage. Height, medium. Oct. 30.
- MANANTICO S**—Mr. DeWalt's improved version of the old Manantico. A light cerise-red single. M
- MARIE TASHIMA**—White. Large tube. Fish-hook tips. Diameter 12 inches. Mat. Oct. 5. ----- Each \$0.50
- MRS. JERRY CRAIG**—Beautiful golden bronze spider mum. Very large full flower. Oct. 15.
- MISS GINA HARWOOD**—This variety is a sport of the well known "Rayonante." The quilled petals of this lovely flower is rosy buff bronze in color. Height, tall. October 15.
- PEGGY ANN HOOVER** — Light pink spoon tipped, quilled spider. Oct. 20. 24 inch.
- QUEENS LACE YB 1950**—See New Introductions.
- RAYONANTE**—Long cord-like quilled petals of this full centered flower is light rose pink in color. Height, tall. Oct. 15.
- ROSE SPOON**—A deep rose-red spoon. Blooms Oct. 5. M
- RUBY SPOON**—A large bright ruby-red spoon. Blooms Oct. 1. M
- SEPT. SUNSHINE SD**—A free flowering early yellow. M
- SUNRAY**—A light lemon-yellow anemone. Nearly a yellow Norma. Oct. 15. 30 inch.
- SYLVIA**—Deep solid pink spider with hooked tips. Oct. 15. 24 inch.
- VALIANT SD**—Bold, long petaled flower of bright rose-scarlet. Large, yellow centers. M
- WHITE RAYONANTE** — A sport of "Rayonante." Identical to its parent except in color, which is pure white. Height, tall. October 15.
- WM. MCGREW**—A lovely pink anemone with golden quilled, cushion center. M
- YELLOW DAISY**—Deep lemon-yellow daisy. 24 inch. Oct. 25.
- YELLOW LACE YB 1951**—See New Introductions.
- YELLOW RAYONANTE**—Another sport of "Rayonante" family. In this case, it is clear yellow. All "Rayonantes" are easily grown.
- YELLOW SPOON**—A very large bright yellow spoon. Blooms Oct. 3. M

COMMERCIAL AND SHOW VARIETIES

All in this list 30c each unless otherwise priced.

AMBASSADOR—A large creamy white incurve. Oct. 24. Height 24 in.

APRICOT QUEEN—Deep orange incurved. Oct. 25.

BEN LEIGHTON—We believe this variety to be best early flowering Exhibition flower in dark color. It is deep wine red. with slightly lighter shade on the outside of the petals. It is a perfectly globular flower of large size. Growth medium. Matures around Oct. 15th. ----- Each \$0.50

BETSY ROSS—A large white compact incurve. Oct. 20. Height 24 inches.

BLAZING GOLD—An intense golden yellow incurve. Oct. 25. Height 24 in.

BRONZE DOT—Sport of Pink Dot. Oct. 25.

BRONZE POMPONETTE—Large deep bronze pompon. Oct. 10. Height 30 in.

CLARRISE—Large lavender-pink pompon. Very good. Oct. 10. Height 30 in.

CREAM DOT—Apricot cream. Medium pompon. Oct. 25.

GARNET KING—A large, very deep red reflex. Nov. 1. Height 24 inches.

GRANITE STATE—Very attractive pot growing variety in pure white. Grows large flowers when disbudded. Matures October 15.

HILDA BERGEN—Large deep mahogany-bronze incurve. Oct. 25. 24 in.

LILLIAN DOTY—A large shell-pink pompon. Oct. 15. Height 30 in.

MAJOR BOWES—Large deep lavender pink incurve. Oct. 20. 24 in.

MISS FRANCIS WHITTLESAY—Best disbudded, making a very large red, incurved ball. Oct. 15.

MRS. H. E. KIDDER D—Incurved flowers, 7 inches across, of bright golden yellow. The best of all large yellows. Oct. 15.

ORCHID QUEEN—A large flowering Orchid pink globular incurved variety. Has very sturdy stem and good foliage. A tall grower. Matures around Oct. 25.

PINK CHIEF—Large lavender incurve. Oct. 15. 24 inches.

PINK DOT—Very popular pink pompon. Oct. 25.

QUAKER MAID—Large pure white incurve. Oct. 15. 26 inches.

ROBINHUE Y 1951—See New Introductions.

RED DOTY—Large red pompon. Oct. 15th. 30 inches.

ROSEUM — Large deep pink incurve. Oct. 15. 28 inches.

SILVER SHEEN — Large satiny pure white incurve. Oct. 1. 24 inches.

WHITE CHIEF—Large white incurve. Oct. 15. 24 inches.

WHITE DOTY—Large white pompon. Oct. 15. 30 inches.

YELLOW AMBASSADOR—Large light yellow incurve. Oct. 25. 24 inches.

YELLOW CHIEF — Large yellow incurve. Oct. 15. 24 inches.

YELLOW DOT—Very popular yellow pompon. Oct. 25.

YELLOW DOTY — Large yellow pompon. Oct. 15th. 30 inches.

DAYLILIES (Hemerocallis)

Floral enthusiasts have found that the Hemerocallis belongs in the garden, not to replace the spring bloom of Iris and Peonies or the fall blooms of the lovely Chrysanthemum, but to fill in that much needed mid-summer bloom. Day by day this beautiful flower is becoming more and more in demand. Hardy from coast to coast and one that will thrive in any garden soil. Ship in early spring and fall.

ADAGIO (Russell)—3 ft. May-June. An unusual brilliant red with deeper eye zone and small yellow throat. **Each \$1.50**

AFTER GLOW (Stout)—3 ft. July-Aug. A delicate and charming blend of pale buff and apricot with a rosy tint in throat. **Each \$2.00**

ANNIS V. RUSSELL (Russell) — 3 ft. March-April. Huge well formed flowers of canary-yellow. As many as 30 six to eight inch blooms on established plants. **Each \$2.00**

AUGUST ORANGE (Stout 1946)—New golden orange, a profuse bloomer on wide branched stems, midseason, 36-inch de. **Each \$2.00**

AUGUST PIONEER (Stout)—3 ft. Aug. Sept. Chrome-orange with red flush on petals. Medium sized flowers in profusion. **Each \$0.75**

AUTUMN PRINCE (Stout)—Clear light yellow flowers on many well branched stalks about 3½ ft. tall. Flowers even tone of good size and texture. The best late, clear yellow, to date. Fine for fall bloom; from August to frost. **Each \$1.00**

ATHLONE—The petals of this giant bloom are a deep rose with a darker rose eye zone. The sepals are canary-yellow. Hgt. 4 ft. May-June. **Each \$3.00**

BETTY SLICK (Russell)—This is a real bicolor, the size and shape of Hyperion. The sepals being the same color as Hyperion. The wide petals are a most brilliant rosy red. 3 feet. June-July. **Each \$1.50**

BAGDAD—Brown and reddish tones with yellow throat, open flowers with a yellow midrib center of petals. 3 ft. June-July. **Each \$0.50**

BARONET (Stout)—Flower full with broad petals of "sprightly fulvous red" which stand above the foliage and remain open evenings. Blooms in June. Originator claims blooms second time in September. Stalks 2 ft. **Each \$0.60**

BIJOU (Stout) — 2½ ft. June-July. Orange, overcast with fulvous-red. **Each \$0.60**

BERWYN—A brilliant, attractive red, listed as carmine, with delicate yellow throat. Hgt. 33 in. June-July **Each \$2.00**

BLACK EMPEROR (Russell)—4 ft. July. Five inch flowers of dark red with a deep yellow throat. **Each \$1.00**

BLACK PRINCE (Russell 1942)—Deep blackish red, very rich and impressive. Small cup of deep yellow. Wide segments, 5 in. bloom opens full. **Each \$1.00**

BOBOLINK (Wheeler 1943)—Trim purple-yellow bicolor, segments very wide and overlapping, recurrent blooming, 45 inch, ev. **Each \$6.00**

BOUTONNIERE (Stout)—Small flowers of wide open form with over-lapping and recurving petals. Sepals clear yellow petals rosy peach with trace of mid-stripe, general effect somewhat bicolor, blooms profusely August and September on 2½ ft. stalks. **Each \$0.50**

BRACKEL (Wheeler 1942)—Deep mahogany-rose with a stitched petal pattern, recurrent bloomer in the south, July. 32 inch, ev. **Each \$4.00**

BRUNETTE (Stout)—One of the earliest reds to bloom. The full flowers are medium in size, and the plants bloom profusely. June. Evergreen. 36 inch. **Each \$1.00**

CABALLERO (Stout)—A distinct bicolor, petals vermilion red, throat and sepals golden yellow on stalks 3½ ft. tall, flowers of good size and blooms in July and August. A tall, gay and brilliant addition to the summer garden. **Each \$1.00**

CERISE (Wheeler 1947)—Striking scarlet with rosy-crimson overflush, tall and imposing, 36 inch, ev. **Each \$6.00**

CHLOE (Nesmith)—Full ruffled flower with broad petals, deep yellow background flecked and powdered golden sepia. Unusual for both form and coloration. 3 feet. August. **Each \$1.00**

CHENG TU (Stout)—3 ft. July. Coppery orange-red with velvety carmine mid-zone. **Each \$0.50**

CINDERELLA—Petals red-copper, sepals lemon-yellow. 2½ ft. July. **Each \$0.30**

- CINNABAR**—Glistening orange sprinkled with cinnamon. 2½ ft. July-Aug. ----- **Each \$0.30**
- CITRINA**—A sweet scented lemon yellow. 2 ft. Aug.-Sept. ----- **Each \$0.30**
- CLARRICE** (Russell)—3½ ft. A lovely salmon with delicate yellow throat. June-July. ----- **Each \$1.00**
- COMET** (Russell)—3 ft. July. A fine bicolor 6 in. flower with blended rose petals and soft yellow sepals. **Each \$1.00**
- CRAEMORE HENNA** (Plouf)—Flowers of good size and form of fulvous reddish color on stalks 2½ ft. tall. Desirable because of early mid-season bloom, June and July. ----- **Each \$1.00**
- CRAEMORE RUBY** (Plouf 1938) — Intense ruby self, 36 inch, de. **Each \$1.00**
- CREAM FRILLS** (H. M. Hill 1948)—A very vigorous exceptionally free blooming frilled cream, makes a fine mass display, 36 inch, de. ----- **Each \$2.00**
- CRESSIDA** (Betscher) — 3½ ft. May-June. Early flowering tall, bright, saffron-yellow. ----- **Each \$0.50**
- DEMON** (Russell)—4 in. blooms of brilliant orange and mahogany. Has a magnetic appeal. 2½ ft. June-July. ----- **Each \$1.00**
- D. D. WYMAN**—Golden yellow with a tawny flush. 3 ft. June-July. **Each \$0.40**
- DOMINION** (Stout)—Large flowers with broad sepals and petals—reddish brown in color with yellow throat, blooms June-July and again later in season. 3 ft. ----- **Each \$1.50**
- DOROTHY McDADE** (McDade 1939)—Clean pure light yellow in a tubular-shaped 5 inch flower blooming late (Sept.) in the north, July-Aug. here. 3½ ft. Evergreen. ----- **Each \$0.50**
- DOROTHEA** (Lester)—Very attractive and different. The 6 inch flowers have a soft, unusual, and very beautiful coloring which gives an orchidish introduction, for it is such an unusual color that it is difficult to check it even with the official color standards. The originator's color description as "rose-buff" is as good as any. Flower over 5 inches across. July-August. ----- **Each \$5.00**
- DR. REGAL**—Orange-yellow with brown reverse. Blooms at iris time. 2 ft. May-June. ----- **Each \$0.40**
- DR. SLAUGHTER** (Russell)—A fiery red daylily with an orange stripe through each semi-recurved petal, and a small orange throat. 3½ inch bloom. Height 2½ ft. June-July. (1947 Evergreen). ----- **Each \$4.00**
- DR. STOUT** (Traub)—M. 36 inch. A brilliant sunburst coloring. The ground coloring is deep orange with an overlay of sprightly red giving the flower a very burnished cast. Open type flower 5 inches across. ----- **Each \$2.00**
- DUCHESS OF WINDSOR** (Traub)—Cup shaped blooms, shading from light cream to buff with a delicate flush of rose in the throat. Very popular with Hem lovers. Hgt. 32 in. Blooms June and again in late August on established plants. ----- **Each \$1.00**
- DUMOTERI**—A rich cadmium-yellow. 2 ft. May-June. ----- **Each \$0.40**
- EASTER MORN** (Wheeler)—M. 38 in. Large Amaryllis-like flowers of a deep buff-yellow with a mid-zone. Petals of extra heavy texture. ----- **Each \$5.00**
- EARLY BIRD**—30 in. A six inch pale yellow with cream midrib. Petals slightly ruffled. Blooms early with the late iris. High branching as all early hems have. ----- **Each \$3.00**
- EVANGELINE** (Russell)—3 ft. May. Petals are rosy red with deep wine eye zone. Sepals are lighter in color. Flowers are 5 to 6 inches across. ----- **Each \$2.75**
- EVELYN CLAAR** (New) (Dr. Kraus)—A wide petaled salmon-pink. **Each \$15.00**
- FLANDERS** (Lester)—A 4½ in. bright red self with yellow throat. Wide, overlapping petals. Sun proof. Stands up well in all weather. Hgt. 3 ft. **Each \$3.00**
- FLORHAM**—Beautifully frilled, sweet scented yellow. 2½ ft. June-July. ----- **Each \$0.40**
- FULVA ROSEA** (Species)—3½ ft. June-July. The most beautiful of any known species of hemerocallis. The flowers are a luscious, clear, scarlet-pink on tall graceful stalks. ----- **Each \$2.00**
- GEORGIA** (Stout)—M. 38 in. An excellent variety with wide petals and large flowers. Buff with delicate rose tints reminiscent of peach colors. One of our favorites. Evergreen. ----- **Each \$3.00**
- GEORGE KELSO** (Traub) — Splendid large flower with pronounced ruffled petals. The soft light orange coloring is suffused with bronze, the sepals being somewhat lighter in color than the petals. Vigorous, blooms in June and July. 36 inches ----- **Each \$1.00**
- GEORGE YELD** (Perry)—Large flowers of bronzy apricot flushed with brownish red. Midseason. 36 inch. -- **Each \$0.40**
- GOLDEN DREAM** (Betscher)—3½ ft. July. Clean golden-orange of medium size. ----- **Each \$0.50**

GOLD DUST—A dwarf, soft yellow that blooms at iris time. 1½ ft. May-June.

----- Each \$0.30

GOLDEN WEST (Sass)—Lovely large funnel-shaped flowers, a deeper shade than Sunny West. Blossoms are of heavy texture making this a wonderful garden variety. 4 ft. tall. July and August. ----- Each \$1.00

GYPSY (Betscher)—Orange with slight red shadings blended beautifully together giving it appearance of smoky orange, about 5 inches spread. 3½ ft. tall. Stems and foliage strong, blooms late July. ----- Each \$0.40

HANKOW—Introduced by Dr. Stout. The flowers are large, wide-spreading (5½ inches), rich yellowish orange with a bold scarlet eye-zone in the petals, one of the finest Hemerocallis. 3½ to 4 ft. July-August. ----- Each \$0.50

HALO (Wheeler)—A medium-sized, yellow flower with a cinnamon-colored halo. Very strong grower. ----- Each \$2.50

HAZEL SAWYER (Wheeler)—M. Re. 36 inch ev. In the pink class and very lovely in the garden. The lighter margins set off the lavender pink tones of the flower. ----- Each \$3.00

HESPERUS (Sass)—Lovely seven inch blooms, empire and light cadmium yellow giving a delightful Jersey cream effect. Several flowers open at once on tall, well branched stalks four feet tall. Blooms in July and August. ----- Each \$0.75

HONEY REDHEAD (Nesmith)—M. 34 inch. Brilliant plush-like rose-red flowers with a heavy influence of maroon and copper. The very center of the flower has a bright star-like blaze of chrome to orange-yellow. A fine, free flowering variety. ----- Each \$2.00

HOPE (Parry)—A very dainty, charming two-toned flower, with apricot-rose petals having a lighter mid rib. Sepals soft yellow. Height 3 ft. Aug.-Sept. ----- Each \$1.00

HYPERION (Mead 1925) — Very large soft canary yellow, fine form and fragrance, long considered one of the best. July-Aug., 42 inch, de. ----- Each \$0.50

J. A. CRAWFORD (Betscher 1929)—Large, brilliant apricot yellow, slightly fluted and crimped. Excellent substance, tall and vigorous. June-July. 4 feet. ----- Each \$0.40

JOANNA HUTCHINS (New) (Dr. Kraus)—A lovely orange of heavy texture. ----- Each \$3.50

JOY RUSSELL (Russell)—5 ft. June. Tallest of the pale lemon yellows with 5 inch blooms of excellent texture.

----- Each \$1.00

J. R. MANN (Betscher)—3½ ft. June-July. Large, soft buff-orange with frosty sheen. ----- Each \$0.40

J. T. RUSSELL (Russell)—3 ft. May-June. Petals are lemon-yellow with cinnamon-red markings on each side. Sepals, clear lemon. Flowers 6 inches across. ----- Each \$1.00

JUDGE ORR (Orr)—E. 30 inch. The outstanding soft orange-yellow blooming at Iris time. It is as far advanced over the old time, early blooming Day-lilies as the modern Daylilies are over the old Flava. Prolific and free flowering; wonderful too as a cut flower. ----- Each \$1.00

JUST MARY (Russell)—36 in. Red veins running through a yellow background with a deeper eye-zone. Keeps well evenings, heavy bloomer. ----- Each \$1.50

LIGHTS OF PARIS (Russell)—36 inch. True yellow tips, brilliant red, keeps well. ----- Each \$2.00

LINDA (Stout)—Golden yellow pastel shaded, cinnamon flecked with red eye in sharp contrast to its bright and clear yellow sepals—practically a bicolor, petals pleasingly crinkled. Large flowered variety. 5 inches. 30 inches tall. Blooms in July and August. ----- Each \$0.50

MABEL FULLER (New) (Dr. Kraus)—A reflexed dark red. ----- Each \$5.00

MAID MARION (New) (Mrs. Lester)—42 in. A step nearer to pink. A lovely six inch coral-rose slightly ruffled. Color is clean and clear of any fulvous tint. A throat of yellow tinted green. Withheld for propagation.

MAJESTIC (Stout)—Very large, clear orange flower of heavy texture. Beautiful. ----- Each \$1.00

MANITOU (New) (Dr. Kraus)—An early bronze with a tendency to doubleness. ----- Each \$3.50

MARGARET PALMER—Evergreen. This beautiful flower was named for the garden editor of the Houston Press. A lovely red cardinal eye zone. The sepals are yellow, overcast red. Yellow throat. 4½ inch bloom. Hgt. 2½ ft. May-June ----- Each \$1.00

MARY GUENTHER (Russell)—An outstanding bicolor of good size. The petals are velvety carmine red, the sepals clear yellow. One of the best non fading. Blooms in July on stalks 2 ft. ----- Each \$1.00

MARY STOKER (Perry 1932)—Brown, red and canary yellow, large and wide, very fine, July-Aug., 36 inch, de.
----- **Each \$1.00**

MELISIO (Russell)—A lovely rounded 5 in. flower with wide, ruffled petals of old rose, recurved sepals of canary-yellow with edges of old rose. Light green throat. Keeps well late into night. 2½ ft. June. ----- **Each \$2.00**

MERRY MOOD (Nesmith). — A cherry pink that is most effective in the garden. According to Ridgeway the petals Rose dore. Sepals have a lighter background flushed with deeper color. There is a Jasper red zone about the yellow throat. Medium flowers on well branched stalks. July-August. 40 in. Withheld for propagation.

MIDDENDORFI—Fragrant rich orange-yellow. 2 ft. June. ----- **Each \$0.40**

MIKADO—Large rich orange with deep mahogany throat. 3 ft. June-July.
----- **Each \$0.40**

MING TOY (Wheeler 1948) — Dainty semi-dwarf bicolor in magenta and orange. ----- **Each \$3.00**

MINNIE (Hayward)—A rich mahogany with a glint of crimson. An orange throat lights the center of the flower giving it commanding attention. Hgt. 3 ft. Blooms June-July. -- **Each \$1.00**

MISSION BELLS (Hall) — Large wide petaled, ruffled flower of clear medium yellow producing up to 52 flowers to stalk on established plants. A fine variety that is a strong grower and a free bloomer. July-August. 3 ft. **Each \$2.50**

MODESTY (Betscher) — Creamy yellow self color, raised midrib. Long season of bloom, early June into July. 3 ft.
----- **Each \$0.50**

MOONBEAM (Sass)—Large creamy yellow flower on well branched stalks 5 ft. tall. Petals, sepals and throat of flower uniform color, of good substance and texture, blooms July-August. A splendid tall flowering variety.
----- **Each \$1.00**

MRS. A. H. AUSTIN (Betscher)—3 ft. July. Especially fine, thick textured deep golden-yellow. ----- **Each \$0.50**

MRS. B. F. BONNER (Russell)—2½ ft. June-July. The color of hyperion but claimed to be larger and finer.
----- **Each \$1.00**

MRS. CHAS. WALGREEN (New) (Dr. Kraus)—A lovely salmon-rose.
----- **Each \$7.50**

MRS. JOHN T. TIGERT (Watkins)—A very bright red with a lovely yellow throat. A very good garden subject. Prolific and sprightly, very hardy and one of the best in this class. Hgt. 36 in. Blooms June. ----- **Each \$1.00**

MRS. W. H. WYMAN (Betscher)—4 ft. July-Aug. Glistening light yellow, one of the last to bloom. ----- **Each \$0.50**

MT. VERNON—Dormant. This full, wide flower is lemon, deeply overcast coral-rose. It multiplies fast, blooms profusely and is an excellent keeper as a cut flower. If you want something really different in Daylilies, here it is. 5 inch bloom. Hgt. 2½ ft. April to June.
----- **Each \$1.00**

MYKWA (Russell)—A lovely glistening dark red of good size, does not fade in hottest sun. Midseason. 42 inches.
----- **Each \$1.50**

NARANJA (Wheeler 1947)—Clear deep orange self, large and well formed, ruffled and brilliant, 36 inch.—**Each \$8.00**

NEBRASKA (Sass 1937) — One of the finest of the pure orange class, tubular form, late midseason, 36 inch. **Each \$0.50**

NOSIESTA—Evergreen. Nosiesta is aptly named, since it seems never to stop blooming in our fields. It really has more than two blooming seasons here. The plant is a fast grower and has a most unusual deep yellow flower, almost chrome color, blending perfectly with paler varieties. 6 inch bloom. Hgt. 3½ ft. April-May. ----- **Each \$1.00**

OLD VINTAGE (Russell 1942) — Tall wine color with yellow throat, 36 inch, ev. ----- **Each \$1.00**

OPHIR (Farr 1924) — Large trumpet shaped golden yellow of fine form and quality, midseason, 36 inch, de.
----- **Each \$0.40**

ORANGE BEAUTY (Sass 1944) — Pure deep golden orange of extra fine form and heavy substance, wide branching, long season of bloom, quite fragrant, midseason, 44 inch, de. ---- **Each \$4.00**

OUR PET (Russell)—2 ft. April to June. Tiny 3½ inch blooms of rich deep yellow. Overcast with orange-red. Fiery red eye zone. Very profuse bloomer.
----- **Each \$1.00**

PAINTED LADY (Russell 1942)—Large wide open flowers flushed red with cinnamon over yellow, wide ruffled petals, heavy substance, an indescribably beautiful blend, 36 inch, de. ---- **Each \$4.00**

PAI PEI (Russell)—30 inch. A four inch flower of rosy pink, its petals are rose with a deeper rose red eye-zone. ----- **Each \$3.00**

PALAMINO (Russell)—30 inch. Creamy buff with a trace of pinkish rose. ----- **Each \$2.50**

PAMELA (New) (Dr. Kraus)—A very lovely buttercup yellow. -- **Each \$3.50**

PARRADO (Russell)—3 ft. July-Aug. 4½ blooms of palest shell-salmon with deeper salmon eye zone. Golden-yellow throat. ----- **Each \$2.00**

PATRICIA (Stout)—3 ft. July. Lovely pale lemon-yellow with greenish throat. Cool, fresh looking, weather resistant, waxy 5 inch flowers. Very fragrant. ----- **Each \$0.50**

PEACH BLUSH (Lester)—A 6 inch flower of peach-yellow with a faint pink eye zone. Well branched and graceful. Very floriferous, 40 inches. ----- **Each \$3.00**

PERSONAL APPEARANCE (Russell)—2 ft. A very late, very profuse bloomer, 5 inch ruffled flowers of pale yellow with sepals of golden yellow. **Each \$1.00**

PINK CHARM (Nesmith 1940) — Soft ochre-red giving a garden effect of deep coral pink, late, 38 inch. --- **Each \$1.25**

POMEGRANATE (39-44) (Nesmith)—Radiant and glowing is the tall upstanding red with tints of copper and tan on the margins of the sepals and petals. The flowers are shaped like an open lily with wavy edges and very graceful form, the stalks have wide branchink. August. 50 inches. ----- **Eafh \$3.00**

PORT (Stout)—A full flower of rich sprightly red, with sturdy, much branched stalks bearing many flowers. Slightly darker in mid-zone; greenish throat. Open evenings, 2½ ft. July and August. ----- **Each \$1.00**

PRAIRIE GOLD (Russell)—2 ft. A semi-dwarf with 4 inch blooms of beautiful canary-yellow. Blooms in August and continues for some time. -- **Each \$1.00**

PRIMULA (New) (Dr. Kraus)—A large early wide petaled yellow.---**Each \$3.50**

PURPLE SAGE (Russell)—Deep wine; one of the darkest of the purples. The petals are ruffled, with a slightly yellow mid-rib. Flowers of good size that keep well in the hot sun. June-July. 3 ft. ----- **Each \$1.00**

PURPLE WATERS (Russell) — A deep wine colored day lily of good size, flowers open full and the ruffled petals are slightly reflexed, the throat is greenish yellow and the flower keeps well in the evening. 3 ft., tall, blooms in July and August. ----- **Each \$1.00**

QUEEN ESTHER (Sass)—A very brilliant crimson, medium size, very compact form. Hgt. 36 in. July. -- **Each \$5.00**

QUEEN OF GONZALES (Russell)—Color of flower is chrome yellow or light orange, the petals are broad and overlapping. The six inch blooms remain open over a long period when cut. One of the earliest of the large varieties to bloom on stalks 3 feet tall. **Each \$1.00**

RADIANT (Yeld)—3 ft. July-Aug. Clear fine orange of good texture. **Each \$0.50**

RAJAH (Stout)—Large flowers of English red with darker eye-zone. Throat orange with greenish tinge. Well branched stalks, 3½ ft. Open evenings. ----- **Each \$0.50**

PED CINDERELLA (Russell) — 2 feet. May-June. A brilliant Chinese-red, with a satiny sheen and orange throat. A bright red that shows off in the garden. ----- **Each \$2.00**

RED CINDERELLA—Dormant. A brilliant Chinese red, with a satiny sheen and an orange throat. The petals of the 4½ inch flower are wide and ruffled and slightly recurved. This is what we'd term a real circus-wagon red and in full bloom it shows off a block away. Hgt. 2½ ft. May-June. ----- **Each \$1.50**

RED PERFECTION (Russell)—36 inch. An orange red with petals slightly ruffled. ----- **Each \$2.50**

REDWOOD (H. M. Hill 1948)—A fine shade of clear red with bright yellow in the throat. The flower heads are well-branched on tall strong stems. **Each \$5.00**

ROSE OF TEXAS—Dormant. Rosy red, almost fiery red but lighter. Highly favored in my field and a very fast grower. 4 inch bloom. Hgt. 3 ft. April-May-June. ----- **Each \$2.00**

ROSALIND—This is one of the most interesting species, the parent and source of our pink and rose colors. Rosalind is most distinctive, a bright rose-red shade with a silvery sheen. Very pretty. ----- **Each \$2.00**

RUSSELL'S MINUET (Russell)—2 ft. 4½ inch dwarf with wide overlapping petals of rich rose with wide yellow stripe down center of each. Sepals, canary yellow. ----- **Each \$1.00**

SACHEM (Stout)—4 ft. June-July. An early rich deep red, near carmine, 5 inch flowers with greenish-orange throat. ----- **Each \$1.00**

SCARLET SUNSET (Wheeler 1947)—Rated by many as the most brilliant of all reds, striking color gem, medium size, 30 inch, ev. ----- **Each \$6.00**

SEMINOLE CHIEF (Lester) Blooms of fine form and of good size. A cherry red that is very attractive. 32 inches. July ----- **Each \$1.00**

SERENADE (Stout 1935)—Crinkled pale yellow with a pinkish flush, June-July. 48 inch, de. ----- **Each \$0.50**

SINGAPORE (Bechtold)—2½ ft. June-July. Large, fluted, pale yellow self 6 inch broadly open flowers. **Each \$0.50**

SIR MICHAEL FOSTER—3½ ft. June-July. Large apricot yellow with broad ruffled petals. Very vigorous. **Each \$0.50**

SKYLARK (Russell)—4 ft. May-June. Lemon with a faint green throat, very good substance. ----- **Each \$2.00**

SOVEREIGN — Soft chrome - yellow, shaded brown on outer petals. 2 ft. May-June. ----- **Each \$0.40**

SPRING PARADE—Dormant. The 4½ inch bloom has intensely ruffled petals of true raspberry color with a deeper eye zone and deep veins running through each wide twisted petal; huge apple-green throat and rosy brown sepals. Hgt. 2 ft. April-May. ---- **Each \$3.00**

STALWART (Cook) — Large flower of tawny reddish bronze and orange with a gold throat. The petals are recurved with a golden midrib. July - August. 3 ft. ----- **Each \$0.50**

SUNNY WEST — A Sass origination. Very large flower of waxy canary yellow. Tall stems with many buds. Tall and late. July-August. 4 ft. **Each \$0.60**

SUSAN (Russell)—3½ ft. June-July. Six inch flowers of brilliant red with canary stripe in center of each. Sepals are yellow with rosy edge. Green throat. ----- **Each \$1.00**

SWEETBRIER (Nesmith)—A large flower of dull rose blended apricot, wide open form showing a soft yellow throat. Plant is vigorous and prolific. Mid-season. 40 inch. ----- **Each \$2.00**

SYMPHONY (Stout)—A delicate blend of pastel tones, sepals yellow, petals rose with mid band of darker red, 3½ ft. blooms in June and July. Fragrant, open evenings. ----- **Each \$1.00**

TANGERINE (Yeld)—True tangerine colored flowers in late spring, buds tinted red, semi-dwarf, twenty inches tall in bloom May and June. ---- **Each \$0.75**

TARUGA (Stout)—Clear lemon-yellow with a faint cinnamon dust effect in the midzone area. Flowers are large, 6 inches or more in diameter, petals have graceful curlings and foldings. The wide open flowers of Wau-bun type are abundantly produced on 3 ft. stalks. Midseason. 36 inch. ----- **Each \$1.00**

TAJ MAHAL (Russell) — 2 ft. Very early. Rich chrome color with a velvety sheen and a wide eye zone of rich purple-red. Five inch flower. Fast multiplier. ----- **Each \$1.00**

TEJAS (Russell)—3 ft. June. An intense fiery red with yellow throat. **Each \$1.00**

THERON (Stout)—3 ft. June. Deep red with curved and twisted petals. Pale yellow-orange throat, shaded green at the base. ----- **Each \$2.00**

THUMBERGIA—A rich buttercup-yellow. 2 ft. June-July, ----- **Each \$0.30**

TRAIL OF GOLD (Russell)—3 ft. May-June. Buff chrome self with huge, twisted petals, slightly ruffled, 6 inch flowers. ----- **Each \$1.00**

VESTA (Stout)—2½ ft. May-June. Deep orange with slight fulvous markings in mid-zone. ----- **Each \$2.00**

VEGA (Wheeler 1948)—Semi-dwarf deep wine purple with bright canary throat. ----- **Each \$2.00**

VOGUE (Russell)—Dwarf 18 in. A bi-color, sepals are golden and petals are rose with a wide yellow mid-rib. ----- **Each \$2.50**

WAUBUN (Stout) — 3 ft. July-August. Uniform cadmium yellow, outer half overcast delicate fulvous-red. Petals large and broad. ----- **Each \$1.00**

WINCHESTER (H. M. Hill 1950)—Golden yellow with a brownish eye-zone, on the order of Mikado, and not outstanding in color, but it seems to be an ever bloomer, starting early and continuing throughout the season, last year a small planting gave bloom 4 months. ----- **Each \$3.00**

YELLOWSTONE (New) (Dr. Kraus)—A creped and kinkled fragrant yellow ----- **Each \$3.00**

A SELECTED LIST OF TALL BEARDED IRIS

(Shipment of Iris Starts July 1)

Name of variety is followed by the name of the originator and the year of introduction. Season of bloom is indicated by the initials E-M-L, signifying early, mid-season, or late. Height is given in inches.

ACTION FRONT (P. Cook '42)—M 36 in. Big, bright, bold, copper-red.....\$1.00

ADVENTURE (Grant '41)—M 40 in. A cream and raspberry plicata with standards and falls reversed.....\$0.50

ALADDIN'S WISH (Murawska '45)—M 36 in. Medium blue with brushings of cream. A large, tall and very distinct plicata\$1.75

ALBA SUPERBA—(J. Sass '43) — M 38 in. Large flaring white which has been unreliable here\$2.00

AMARANTH (Whiting '42)—M. 42 in. Light rosy purple self. Good form, smooth coloring with an enamel finish\$1.00

AMIGO (Williamson '34)—M 30 in. Light lavender standards brilliantly contrasted with deep, velvety, violet falls. A color gem.\$0.50

ANGELUS (Egelberg '37) — L 36 in. Creamy lavender-pink. A distinct and beautiful color in a large, broad-petaled flower of heavy substance\$0.50

ARAB CHIEF (Whiting '44)—VL 38 in. Flash, rich henna-tan. Gorgeous...\$1.00

ARCADIA BUTTERCUP (Milliken)—So clear and bright is this deep yellow that it glistens and shines even on the dullest days. The color is uniform throughout. Flaring form, excellent substance and branching. 30 in. Early.\$3.50

ARCTIC (Kleinsorge '40) — M 40 in. Smoothly enameled, creamy white with bright yellow heart. Ruffled, closed standards and broad falls\$0.50

AURORA DAWN (Whiting '48)—M. 40 in. A brilliant blend of rose-pink and gold, as fresh as the morning. Well branched and good substance.\$2.00

AZTEC COPPER (Kleinsorge '39)—M 36 in. Subtle blend of smoky-violet and soft copper. Large, well substandard flowers on well branched stems...\$0.50

AZURE SKIES (Pattison '43)—M 36 in. Airily ruffled pale lavender-blue with firm, domed standards and widely flaring falls. Substance and branching good\$0.50

BERKLEY GOLD (Salbach '42)—ML 36 in. Very rich deep yellow and one of the top notchers in this color. Good size and form. Heavy substance\$0.75

BERTHA GERSDORFF (J. Sass '42)—Standards are yellow flushed pink. Falls yellow flushed pinkish purple. Colors are marbled rather than blended...\$1.00

BLACK AND GOLD (Kleinsorge '43)—M 36 in. Gold standards and blackish-maroon falls in striking contrast. Good substance.\$1.00

BLUE RYTHM (Whiting '45)—ML 38 in. A cornflower blue of great purity. About the bluest of all in this shade. Wide domed standards and semi-flaring falls with broad hafts and exceptional substance\$2.50

BLUE SHIMMER (J. Sass '42)—M 38 in. The best of the white and blue plicatas. Large, crisp, white ground flowers, peppered in a purer shade of blue than any other blue-marked plicata. Peppered rather than buttonhole stitched...\$0.75

BLUE ZENITH (Whiting '42) M 40 in. Lightly ruffled deep sky-blue, large, hardy, vigorous and outstanding ...\$0.60

BRASS BAND (Whiting) —M 38 in. Orange-yellow with deeper falls. Brilliant, dashing and bold like the flourish of a trumpet. Strong stalks on lovely plants. Each\$2.50

BROWN THRASHER (Kirkland '41)—M 34 in. A brilliant two-toned brown glistening with metallic iridescence. True brown shades found in no other Iris\$1.25

BRYCE CANYON (Kleinsorge '44)—M 36 in. Distinct, warm shade of henna-copper\$2.50

BUCKSKIN (Kleinsorge '39) — Large, golden tan of firm substance and flaring falls ----- **\$0.40**

BUECHLEY GIANT (Buechley '39)—M 48 in. A very large medium blue **\$0.40**

BUFFAWN (Andrews 1940) — M 34 in. Soft pinkish buff set off with brilliant tangerine beard. A color gem ----**\$0.50**

BUTTERCUP LANE (Hall '41)—M 30 in. Beautifully ruffled deep yellow --**\$0.50**

CALCUTTA (Klein '38)—M 42 in. An unusual cocoanut-brown -----**\$0.40**

CALIFORNIA GOLD (Mitchell '33) — Intense, somewhat metallic yellow, large and free-blooming. One of the best in its price class -----**\$0.40**

CALIFORNIA PEACH (Salbach '41)—EM 38 in. Blend of peach, pink and apricot enlivened by a hint of blue in center of falls -----**\$0.50**

CAROLINE BURR (Smith '40)—ML 40 in. Large flowered frosty ivory overlaid with pastel chartreuse. Semi-flaring and vigorous -----**\$1.00**

CASA MORENA (DeForest '43)—M 34 in. Extra large, glistening henna-brown self ----- **\$2.00**

CEDAR ROSE (Whiting '41)—M 36 in. A rosy-red self made richer by brown infusion ----- **\$0.75**

CHANTILLY (Hall' 45)—M 36 in. Lovely orchid-pink with edges of both standards and falls so heavily crimped as to appear edged with lace -----**\$2.00**

CHIEF POKING FIRE (DeForest '42)—ML 35 in. A large, bold iris of velvety-brown ----- **\$1.00**

CHINA MAID (Milliken '36)—M 40 in. An immense flower of good form and substance in blends of deep pink, golden-bronze and soft lilac. Prolific. **\$0.50**

CHRISTABEL (Lapham '36)—M 36 in. Large flowers of excellent coppery-red ----- **\$0.50**

CITY OF LINCOLN (H. Sass '37) — L 40 in. Acknowledged king of the variegatas. Rich golden - yellow standards. Bright, velvety-red falls -----**\$0.50**

CLARIBEL (J. Sass '36)—Large flowered white plicata with blue stitching **\$0.40**
CLOTH OF GOLD (Whiting '45)—M 36 in. Brilliant deep yellow self -----**\$1.50**

CONGO PRINCESS (Whiting '47 — M 36 in. Rich plum-purple bicolor with glossy finish. Hardy and very prolific ----- **\$1.00**

COPPER FRILLS—M 34 in. Crisply ruffled, rosy copper self—well named. A border iris, rich in color, good for massing. Flowers rather small but well proportioned to the well branched stalk. Nice for cutting. Appreciated more each year ----- **50c, 3 for \$1.00**

COPPER LUSTRE (Kirkland '34)—M 36 in. A blend of gold, copper and pinkish-tan that produces the effect of glistening copper -----**\$0.50**

CORNFLOWER (Whiting '48) — Late mid-season, 36 in. A really blue self. Not one of the largest, but one of the bluest irises we have ever grown. Darker and much bluer than either of its parents, it comes close to cornflower blue, of classical form, with well domed standards and nicely flaring falls. Branching good, plant growth. -----**\$2.50**

CYNTHIA ANN PARKER (Whiting '47) EM 36 in. Clear light blue self with a brilliant yellow beard -----**\$1.00**

DAMASCUS (Tompkins '45)—ML 38 in. Takes an iris like this with standards of Spanish-yellow and falls trimmed with Navajo-orange to really brighten up your garden. Flowers are broad and full, borne on tall sturdy stalks -----**\$1.50**

DAWN RAYS (Whiting '48) — M 33 in. A lovely pink and yellow blend. --**\$1.00**

DAYBREAK (Kleinsorge '41)—M 40 in. Large, ruffled golden-pink with slight copper undertone. Well shaped, closed standards and widely flaring falls. **\$1.00**

DAY DAWN (Whiting '40) — M. 38 in. Large flowers of rosy - pink and yellow ----- **\$0.50**

DEEP VELVET (Salbach '39)—A clear, deep purple - violet with silken sheen ----- **\$0.50**

DEPUTE NOMBLOT (Cayeaux '29)—M 52 in. A huge claret-crimson. ----**\$0.40**

- DERRILL HART** (Glutzbeck '38)—ML 40 in. Rose-brown and wine-red. **\$0.40**
- DESERET** (Thorup '36)—M 30 in. A variegata with red brushed falls. **\$0.40**
- DIXIE BELLE** (Milliken '48)—E (White 1937—10 x Lav. 2270-32). Heavily ruffled white—not from Snow Flurry, although it looks as though it should be. **\$2.50**
- DUSKY NIGHT** (Whiting '48)—M 36 in. Very dark blue-violet with a touch of white at the haft. **\$0.75**
- E. B. WILLIAMSON** (Williamson '36)—M 36 in. A glowing, silky, coppery-rose. **\$0.40**
- ELMOHR** (Loomis '42)—M 36 in. A giant flower of bishop's purple with a glossy lustrous texture **\$1.00**
- ELMORROCO** (Becherer's '45)—M 36 in. Beautiful opal-pink with broad rounded petals and heavy leather-like substance. **\$1.00**
- ELSA SASS** (H. Sass '39)—M 36 in. Frilly flowers of lemon-ice **\$0.50**
- EROS** (Mead-Riedel '34)—M 40 in. Medium sized flowers of silky salmon-pink. **\$0.40**
- EXCLUSIVE** (Grant '37)—ML 38 in. A very soft powder-blue. Different. **\$0.40**
- EXTRAVAGANZA** (G. Douglas '44)—VL 36 in. Cream white standards, luminous falls are a blend of copper-red and violet. Best amoena since Wabash. **\$3.50**
- FIRECRACKER** (Hall '43)—M 32 in. A brilliant dark burgundy-red plicata with a yellow trim **\$2.50**
- FLORA ZENOR** (J. Sass '41)—M 40 in. Pink, like the foam on a strawberry soda with rosy lines at the haft. A conspicuous tangerine beard **\$0.50**
- FORT KNOX** (Milliken '41)—M 40 in. Smooth finished flower of light yellow **\$1.00**
- FRANK ADAMS** (Lapham '37)—M 45 in. Maize-yellow standards, deep rose falls. **\$0.50**
- FRIEDA MOHR** (Mohr '26)—ML 42 in. Large lilac rose with a gay, semi-flaring form and captivating color that has added charm to gardens for 20 years. **\$0.40**
- FRISCOETTE** (Hill '46)—M 25 in. This little fellow is a miniature San Francisco. A dainty blue plicata used as table iris. **\$0.75**
- FROSTY BLUE** (Whiting '41)—M 38 in. A clear light blue self with frosty coat. **\$1.00**
- FROSTED GLASS** (Becherer '43)—EM 38 in. Palest yellow standards, opalescent white falls with a distinctive yellow edge. Yellow veining on falls. Conspicuous bright orange beard. **\$0.50**
- GARDEN FLAME** (H. Sass '41)—ML 34 in. This glowing garnet-red self with its golden beard and excellent branching is a masterpiece. **\$1.00**
- GARDEN GLORY** (Whiting '43)—M 34 in. Pure, deep rich bordeaux red with a dark beard. Smooth even color throughout, no haft markings. **\$3.00**
- GARDEN MAGIC** (Grinter '36)—L 38 in. Glowing red, rich and vivid **\$0.75**
- GILT EDGE** (Whiting '41)—M 38 in. A fresh creamy iris, gilded on the edge with deeper yellow. Large, rounded blooms on tall, well branched stalks **\$0.75**
- GLORIOLE** (Gage '33)—Huge, frosty, pale blue with excellent substance. **\$0.50**
- GOLDEN FLEECE** (J. Sass '40)—ML 40 in. Gorgeous lemon-toned flower with creamy falls, edged gold. Huge and ruffled. Very impressive **\$1.00**
- GOLDEN HIND** (Chadburn '34)—M 32 in. One of the richest butter-cup golden yellows grown. Flowers of medium size. **\$0.40**
- GOLDEN MAJESTY** (Salbach '38)—Deep golden-yellow that does not fade in the sun. Large flower with closed standards and broad falls. **\$0.50**
- GOLDEN SPIKE** (Whiting '40)—EM 36 in. Shining pure dandelion yellow with a thick orange beard. Large oval-shaped flowers with excellent substance **\$0.50**

- GOLDEN TREASURE** (Schreiner '36)—M 38 in. Shimmering silky cream with an outpouring of golden-yellow from the center. ----- \$0.50
- GRACE MOHR** (Johy '35)—M 36 in. Darker, taller and better branched than Wm. Mohr. ----- \$1.75
- GRAND CANYON** (Kleinsorge '42)—M 36 in. Odd deep colored blend of plum, copper and gold. Center brightened by a gold beard and throat ----- \$0.75
- GREAT LAKES** (Cousins '33)—M 42 in. Crisp and flaring light blue. Bluer than Shining Waters. Rugged and hardy. Bold in flower and foliage, stately height and perfect branching. Dykes Medal winner in 1942 ----- \$0.75
- GUDRUN** (K. Dykes '31)—EM 36 in. An immense white with dusted gold throat ----- \$0.40
- GYPSY BARON** (Schreiner '42)—EM 40 in. Marbled plicata of mulberry-purple and silvery-white background in a pattern like feathery frost on window-pane ----- \$1.00
- GLPSY ROSE**(Whiting '46)—ML 39 in. Very large, rich, warm hellebore red with smooth brushing of copper at the haft and hint of blue at the tip of the heavy yellow beard. Heavy substance and strong stems ----- \$4.00
- HAPPY DAYS** (Mitchell '34)—EM 40 in. Giant-flowered smooth light yellow. Tall and finely branched. Used in hybridizing work ----- \$0.40
- HARVEST MOON** (Whiting '44)—M 34 in. Luscious blend of apricot, buff and orange, one of the brightest spots in the garden. Large flowers with heavy substance ----- \$1.00
- HELEN MCGREGOR** (Graves '43)—ML 34 in. Pale blue of exceptional purity. Large, perfectly formed, flaring and daintily ruffled ----- \$5.00
- ICY BLUE** (Weed '41)—Pale blue self, the lightest we list, dusted with a frosted. Large and flaring ----- \$0.50
- INNOVATION** (Hall '45) — ML 37 in. A rose trimmed plicata of large size, good form and substance. Vigorous and free blooming ----- \$1.00
- IOWA MAID** (Whiting '43) — M 38 in. Creamy tan standards and deep rose falls. Unique and captivating color. Smooth, wide-petaled and vigorous. \$0.75
- JAKE** (J. Sass '43)—M 36 in. An outstanding, large, glistening white -- \$0.50
- JANE OPPEL** (W. Swan '47)—M 36 in. Glowing red-gold blended self. Fine form ----- \$0.75
- JONQUIL** (W. '43) — Midseason to late, 42 in. Very large flowers of soft, clean yellow, distinctly edged with deeper yellow. Tall and high branched, it should be planted behind other irises. Strong plants show fast increase ----- \$0.75
- JUNALUSKA** (Kirland '34)—EM 38 in. Unique blend of red, copper, rose and gold. General effect, copper red. Tall and early. Runner-up for Dykes Medal 1938 ----- \$0.40
- KATHERINE FAY** (Fay '45)—M 36 in. Large pure white with no yellow in the center. Broad wavy petals. Semi-flaring falls. Excellent substance ----- \$2.00
- LADY MOHR** (Salbach '44)—EM 36 in. Oddly colored seedling of Wm. Mohr. Standards are oyster-shell white. Falls are pale greenish-yellow with red-violet patch surrounding the beard ----- \$1.00
- LAKE HURON** (J. Sass '42)—M 36 in. A very blue in the medium register. A bright blue that is very effective in the garden. Large and vigorous ----- \$0.50
- LANCASTER** (Cook '40)—M 36 in. A strong rose glow emanates from this tall iris, for its mass of ruffled blossoms and coloring. Cannot be excelled ---- \$0.50
- LAVENDER AND GOLD LACE** (Whiting '46)—M 34 in. Standards clear yellow, lightly tinged lavender, falls lavender-blue, edged with gold and yellow. Vigorous ----- \$1.00
- LIGHTHOUSE** (Salbach '36)—L 36 in. Standards, old-rose, falls coppery-rose, with streams of yellow erupting from the heart ----- \$0.50
- LORD DONGAN** (K. Smith '40)—M 35 in. Silken Chinese violet standards. Velvety pansy-violet falls. The distinctive beauty is due to the pleasing harmony of the two distinct shades of violet ----- \$1.00

- LOS ANGELES** (Mohr-Mitchell '27) — M 38 in. Satiny white with sky-blue stitching in the center. Hardy, vigorous and widely branched ----- **\$0.40**
- LOTHARIO** (Schreiner '42)—ML 38 in. An Amigo-like iris featured by large velvety blooms on tall stalks but not equalling the color contrast of the latter. A grand iris nevertheless ---- **\$1.50**
- LOUVOIS** (Cayeau '36)—M 35 in. Standards, light chocolate. Falls very rich and glossy maroon, edged with light chocolate ----- **\$0.50**
- LOVE AFFAIR** (Mitchell '46)—M 34 in. Charming rose-pink plicata, the standards flushed and stippled deep vinaceous on white; the falls broadly edged with the same color ----- **\$1.00**
- MANYUSYA** (J. Sass-Hill '44)—M 34 in. A delightfully ruffled and frilled orchid pink flower ----- **\$1.00**
- MARQUITA** (Cayeau '31) — L 34 in. Thick, satiny, creamy-white standards. Falls same, heavily veined watermelon-rose ----- **\$0.40**
- MARATHON** (Whiting '48)—M 36 in. A glowing color in the garden. A rich but smooth blending of apricot, buff and rufus orange. Wide form and heavy substance ----- **\$4.00**
- MASTER CHARLES** (Wmsn '43)—M 38 in. Rich glowing mulberry purple with a wonderful sheen, jaunty flaring form and excellent substance ----- **\$1.50**
- MATTERHORN** (J. Sass '38)—EM 38 in. Large immaculate white. There is no trace of any other color in this firm subtanced, gracefully flaring white -- **\$0.50**
- MATULA** (H. Sass '39)—ML 38 in. Indescribable blend of rose, orange, crimson and buff. Waved and crimped like those of Midwest Gem ----- **\$0.40**
- MELANIE** (Hill '41)—M 45 in. A lovely orchid-pink of bold size and stature, ideally branched, heavy subtanced **\$0.50**
- MELITZA** (Nesmith 1940)—Impressive and unique is this tall graceful iris of salmony flesh with an intense pinkish tangerine beard, so vivid that the entire flower is infused with this brilliant color. Indispensable as a breeder. Mid-season. 40 in. A.M., A.I.S. 1942. -- **\$0.50**
- MELLOWGLOW** (Whiting '42)—M 36 in. Deep peach or apricot with flush of pink. Broad petaled and perfectly formed ----- **\$3.00**
- MEXICO** (Kleinsorge '43)—L 36 in. Buff-golden standards. Velvety red-brown falls, bordered and bended golden-buff. Very large blended bi-color of gay and brilliant coloring, with wavy, flaring falls ----- **\$1.50**
- MING YELLOW** (Glutsbeck '32) — ML 36 in. A large, clear, rich, smooth medium-yellow of even tones. No veining ----- **\$0.75**
- MINNIE COLQUITT** (H. Sass '42)—M 36 in. A massive ruffled pure white plicata with broad wine-purple border in sharp contrast. Very beautiful. **\$1.50**
- MIRABELLE** (Whiting '42)—M 38 in. Delicate creamy-apricot blend with a touch of pink on the falls. Large heavy subtanced flowers ----- **\$1.00**
- MISS CALIFORNIA** (Salbach '37)—M 48 in. Boldly proportioned lilac-pink of tall stature and vigorous growth -- **\$0.50**
- MONODNACK** (Salbach '37) — L 42 in. Vivid violet-rose. Very large flower **\$0.50**
- MOONLIGHT MADONNA** (J. Sass '43) M 36 in. A large and firmly subtanced clear lemon-ice delicately ruffled. **\$1.00**
- MOROCCO ROSE** (Loomis '37)—ML 38 in. Warm, soft rose-pink with a yellow-glow at the heart. A large flower of beautiful form and substance. ---- **\$0.60**
- MULBERRY ROSE** (Schreiner '41) — M 40 in. Bright purple-rose. A new and luscious color in a big flower. Tall, vigorous and hardy ----- **\$1.00**
- NARANJA** (Mitchell '35)—M 36 in. A deep rich yellow with orange cast on falls ----- **\$0.40**
- NIGHTFALL** (Hall 1942)—M. 36 in. Velvety, blackish, pansy-purple falls. Standards several shades lighter. Size, form, substance and branching most satisfactory. Very floriferous and exceptionally easy to grow. ----- **\$0.75**
- NOONDAY SKY** (Weed '40)—E 40 in. A very large lavender-blue with a light maroon veining at the haft. ----- **\$0.50**

NYLON (Whiting '40)—EM 36 in. Carmel-tan with rosy transfusion. Large flower. ----- \$0.50

ORMOHR (Kleinsorge '37)—M 40 in. Lilac overcast with silver. Violet veining ----- \$0.40

OLA KALA (J. Sass '43)—M 38 in. Brilliant yellow, almost orange in its depth and intensity. Medium large, well substantiated, semi-flaring and ruffled, it has strong, nicely branched stem and is very weather resistant. Dykes Medal 1948 ----- \$0.75

OLD PARCHMENT (Kleinsorge '39)—M 39 in. Strong textured flowers of ivory-white, with an over-lay of golden dust, incredibly gossamer. Large with domed standards and flaring falls. \$0.50

ORANGE FLAME (Salbach '40)—M 30 in. Standards golden-orange, of exceptional brilliance. Falls semi-flaring and a fiery copper-red ----- \$0.50

ORLOFF (H. Sass '37)—ML 33 in. Medium sized but heavy blooming yellow ground plicata. The cream yellow background is heavily dotted and edged red-brown ----- \$0.50

PASTEL PORTRAIT (Whiting '48)—M 36 in. A large, creamy-pink and gold blend ----- \$1.00

PEACH BLOW (H. Sass '43)—M 34 in. A light yellow plicata with rosy-pink markings. Medium large and well branched ----- \$1.00

PRAIRIE SUNSET (H. Sass '39)—ML 36 in. This iris is unforgettable with its iridescent colors of apricot, peach, pink and rose with a sprinkling of gold shining throughout. Dykes Medal 1943 ----- \$1.00

PRISCILLA (Whiting '42)—M 30 in. A white that is very white for it has no touch of any other color, even the beard is white. Always well branched, a long season of bloom. A gem in any garden ----- \$1.00

PURPLE GIANT (Gage 1933)—M 36 in. Large true purple, showy and vigorous. ----- \$0.40

RADIANT (Salbach '36)—M 30 in. Standards golden-bronze. Falls intense velvety terracotta. Not tall or vigorous but vivid in coloring ----- \$0.50

RAEJEAN (Whiting '40)—L 38 in. Closely domed standards are deep chrome-yellow, wide falls are of lighter tones edged with deeper yellow. Substance very firm and texture glistening. Very free with bloom and increase ---- \$0.50

RANGITIKI (Stevens '41)—M. 36 in. Among the finest of rich purple iris is this lustrous carmine-purple self, enhanced by a glowing gold beard -- \$0.75

RANGER (Kleinsorge '43) — L 36 in. Large, long, dark but brilliant near crimson, with cone shaped standards and wide glossy falls. A fine late bloomer ----- \$1.50

RED DOUGLAS (THE) (J. Sass '37)—ML 38 in. Huge, smooth, rosy, wine-red, deep and intense and solid to the haft. This purple-red is deservedly popular. Dykes Medal 1941 ----- \$0.75

RED GLEAM (Lapham '39)—ML 34 in. Brilliant yet velvety-red. A glowing color approaching close to true red \$0.75

RED SAILS (Lapham '37) — A large chestnut flushed red ----- \$0.50

RED TORCH (H. Sass '47)—ML 34 in. Standards, rich bronze-gold. Falls pure velvety-red, very brilliant. Medium sized flowers of flaring form and good substance ----- \$3.00

ROCKET (Whiting '45)—EM 38 in. This has been called the orange iris. The standards are the deepest chrome-yellow, the falls really orange almost to the edge. The flowers are large, wide petals, classically formed and of heavy substance. The stalks are fairly well branched carrying nine to eleven blooms ----- \$5.00

ROUGE BOUQUET (Whiting '41)—LM 34 in. Blended medley of ruby-red, crimson and copper. Blooms are very wide and full, of beautifully rounded form and lasting substance. Excellent growing and blooming habits ---- \$0.75

ROSE DOMINION (Connell 1931)—M. 38 in. Deep rose in a flower of great individuality with rounded horizontally flaring falls on ideally branched stems. ----- \$0.40

- ROSEMARY** (Whiting '47)—M 38 in. A very large orchid pink. Very hardy, free flowering and prolific ----- **\$0.75**
- ROSE TOP** (H. Sass '41)—L 38 in. Rose-pink stitching on creamy yellow ground. Huge, long and ruffled flower heavily patterned with rose-pink ----- **\$1.50**
- ROSY WINGS** (Gage 1936)—M. 38 in. A soft blending of rosy red and copper changing tone with the light. Very floriferous and appealing. Dykes Medal 1939 ----- **\$0.40**
- ROYAL SCOTT** (Hall '44) — M 38 in. Large plicata, heavily striated with a pleasing tone of burgandy-red, giving a red effect from a distance ----- **\$1.00**
- RUBIENT** (Whiting '42) — ML 38 in. Standards are a rich red-purple and this same color margins the blackish-red velvety falls. An Amigo done in red **\$1.00**
- RUTH POLLOCK** (H. Sass '39)—ML 30 in. A richly colored yellow plicata. Light yellow clearly edged and stitched red-brown ----- **\$0.50**
- SABLE** (Cook '38)—M 38 in. Gorgeous black-violet with a lustrous, silky sheen and brilliance uncommon in so deep a shade. The queen of the blacks -- **\$1.00**
- SAN FRANCISCO** (Mohr-Mitchell 1927) M. L. 38 in. Sister to Los Angeles with much heavier plicating of blue on white ground. Dykes Medal 1927 ----- **\$0.50**
- SHAH JEHAN** (Nele '32) — L 38 in. Creamy-buff standards faintly edged lavender. Late, should be in every garden ----- **\$0.40**
- SHINING WATERS** (Essig '38)—M 42 in. Perfectly formed, large wax-like sky-blue. Tall. Well branched. One of the loveliest blues. Free bloomer ---- **\$0.40**
- SHOW BOAT** (Whiting '49)—M 36 in. Rich red-gold blend with bright blue blaze on falls. Very strong plants **\$1.00**
- SIEGFRIED** (H. Sass 1936)—L. 40 in. Yellow standards and creamy falls, both stippled and dotted purple-brown. Very large tropical appearing bloom supported, with difficulty, on the tall stems. ----- **\$0.40**
- SIERRA BLUE** (Essig 1932)—M.L. 42 in. Magnificent, smoothly-enameled medium blue self with long and broad flaring falls. Deeper in color than Shining Waters, and more hardy. Vigorous Dykes Medallist of 1935. ----- **\$0.40**
- SILVER WINGS** (W. 1949)—ML 38 in. Clean silvery white with flaring falls. White beard, tipped yellow ----- **\$1.00**
- SIOUX CITY SUE** (Whiting-Snyder '47) —M 34 in. A glamorous beauty, named in honor of the lovely red-haired, blue-eyed song. It is a rich auburn-red with a central blaze of blue. The blooms are beautifully rounded, with captivating curvaceous lines. Good habits of growth and blooms ----- **\$1.50**
- SNOQUALMIE** (Brehm '38)—M 36 in. Mellow creamy-yellow aristocrat worthy of the highest praise. Grand form and branching, heavy substance. Vigorous ----- **\$0.40**
- SNOW FLURRY** (Rees '39)—EM 40 in. Beautifully ruffled blue-white. Large and well substanted. Highly branched. ----- **\$1.00**
- SNOW VELVET** (H. Sass '44)—M 38 in. Thick-pealed, velvety-textured white with smoothly-lacquered gold hafts. A beautiful white ----- **\$1.00**
- SOLID MAHOGANY** (J. Sass '44)—M 36 in. Thrilling, brownish-red in a rich and glowing deep tone. Large, well substanted and well branched. Outstanding deep red ----- **\$1.75**
- SPRING CHEER** (W. 1947)—M 36 in. Large, creamy yellow with blue and gold pattern on the falls. Crimped edge. ----- **\$1.00**
- SPINDRIFT** (Loomis 1944)—Remarkable coral-pink, bright tangerine beard **\$1.50**
- SPUN GOLD** (Glutzbeck '40)—ML 38 in. Gleaming, heavy textured, velvety, deep golden-yellow at very large size. Fine form and branching. Dykes Medal, 1944 ----- **\$1.00**
- S. Q. 72** (Loomis Seedling)—A true pink self of very good substance. A smooth, clean, lustrous, light coral-pink. Fiery tangerine beard. Slightly flaring falls. Not named and introduced but available under its seedling number ----- **\$1.00**

STELLA POLARIS (K. Smith '40)—M 40 in. A very large cool white with broad petals, semi-flaring falls, and slight gold reticulations on the hafts. ----- **\$0.50**

SUNSET SERENADE (J. Sass 1943)—ML 36 in. Lovely soft but glowing shade of golden tan, heavy-textured and extraordinary. Selected as the finest of Prairie Sunset seedlings ----- **\$1.00**

SYLVIA MURRAY (Norton 1944)—M 38 in. A new light blue which has received much praise. Result of Great Lakes crossed with Shining Waters. ----- **\$1.25**

TEA ROSE (Whiting '44) — M 36 in. Glowing deep pink with coppery shadings. A strong clear color in a finely formed flower. Broad petaled and full ----- **\$1.50**

THEODOLINDA (Ayers '32)—ML 38 in. Huge satiny-white plicata with button-hole stitching of bright blue ----- **\$0.40**

THREE OAKS (Whiting '43)—M 38 in. A massive bright rose-pink blend, highlighted with an overlay of rosy-copper and with a touch of bright blue in the center of the falls ----- **\$2.00**

TIFFANJA (DeForest '42) — M 38 in. Firm standards of buff and this color also borders the white falls which are brushed at the haft and speckled around the border with golden brown ---- **\$1.00**

TIFFANY (H. Sass '38)—M 34 in. A soft yellow plicata with rose stitching. A favorite in its color class. Large and ruffly ----- **\$0.50**

TREASURE ISLAND (Kleinsorge '37)—M 36 in. A bright clear yellow with a lighter area in the center of each fall. A continuous popular yellow ---- **\$0.50**

VATICAN PURPLE (Whiting '43)—ML 36 in. Rich dark blue-purple with heavy textured satiny finish without haft markings ----- **\$2.00**

VEISHA (Whiting '43)—M 30 in. Bright copper-rose blend with a blaze of blue in center of falls. Ideal for foreground planting ----- **\$0.75**

WABASH (Williamson '36)—M 38 in. Snowy white standards; purple falls with a white margin. This tall, clean cut amoena has no rival. Dykes Medal 1940 ----- **\$0.50**

WHITE CITY (Murrell '39)—EM 42 in. Immense blue-white with crisp ice-cold finish and silken sheen. Eng. Dykes Medal 1940 ----- **\$0.50**

WILD HONEY (Whiting 1946)—EM 34 in. Rich light brown with a glistening glint of gold over the entire flower. Large, long, flower on well-branched, sturdy stalks. Vigorous and hardy **\$1.50**

WINNESHIEK (Egelberg 1931)—ML 37 in. Gracefully formed, intensely colored deep blue with broad, lustrous segments and light ruffling. Further distinguished by a lighter colored margin on the falls ----- **\$0.40**

WINTER CARNIVAL (Schreiner '41)—M 38 in. An outstanding flaring white. Large, graceful, waxy snow-white with gold throat ----- **\$1.00**

WM MOHR (Mohr 1925) — EM 28 in. Famous cross-bred iris which overcomes its cranky growing characteristics and low stature by sheer beauty. Large exotic lavender closely netted with purple veining ----- **\$0.40**

ZEBRA (Pallidavariegata)—M 30 in. An oddity in foliage for rock gardens. Foliage striped cream and green. Flowers light blue ----- **\$0.40**

OLDER VARIETIES OF BEARDED IRIS

The cost of digging and labeling these older varieties is the same as the better varieties and with labor costs rising we are forced to charge **30c each or 12 for \$3.00**. Please list some substitutes as some are becoming very scarce.

ALAN HOYT	EVOLUTION	PEACHES
ALLIES	FOLKWANG	PERSIA
APACHE	GERMAINE PERTHIS	PICADOR
ASIA	GERTRUDE	PLUI D'OR
AT DAWNING	GOLDEN FLARE	PLURIBEL
BALLERINE	GRACE LAPHAM	POTENTATE
BLUET	IMPERIAL BLUSH	PRINCESS BEATRICE
BLUE HILLS	IMPERATOR	QUEEN KATERINA
BLUE TRIUMPH	ISOLENE	REALM
BLUE VELVET	JACQ. GUILLOT	ROSE PETAL
BOADECIA	JUNE BRIDE	SANDRINE
BUTO	KING JUBA	SANTA CLARA
CITRONELLA	KING MIDAS	SIERRA BLUE
CLARA NOYES	LOHENGRIN	SELENE
COPPERSMITH	LONA	SIEGFRIED
CORONATION	LOUIS BELL	SIR MICHAEL
CORONET	LUCRETIA BORI	SPRING MAID
COZETTE	MARCHEL NEY	SUNLIGHT
CRYSTAL BEAUTY	MARY ELIZABETH	SUNMIST
DAUNTLESS	MARY GEDDES	TALISMAN
DELIGHT	MAY SADLER	THAIS
DON JUAN	MOONLIGHT	TROSTINGER
DRAP D'OR	MUSSOLINI	TRUE CHARM
EASTER MORN	NENE	VALOR
ELIZABETH EGLEBERG	NINGAL	WACONDA
ELTOVAR	ODORATISSIMA	

FALL BLOOMING IRISES

Shipment after July 1st

AUT. ELF (Brown)—Cream and lavender bicolor -----	\$0.25	FAR SOUTH —Neat pure yellow of good form -----	\$0.50
AUT. HAZE (Sass)—An attractive soft lavender of fine form and size ..	\$0.25	GLAD SONG (Sass-Hill) — A yellow ground plicata -----	\$0.50
AUT. KING (Sass)—Lavender-blue bicolor -----	\$0.25	JEAN SIRET — A fine yellow dwarf -----	\$0.25
AUT. QUEEN (Sass) — A pure white dwarf -----	\$0.25	KANSAS INGLESIDE (Hill) — Large warm toned red self, rather late as a fall bloomer, but worthy of a place in any garden for its spring bloom alone--	\$0.30
AUT. SUNSET (Lapham)—A fine, large flowered, blended pink -----	\$2.00	OCT. BLAZE (McDade)—Large red-purple -----	\$0.30
DORCAS HUTCHESON (Sass-McDade) —An early and persistent pansy violet, semi-dwarf, up to 20 inches -----	\$0.25	POLAR KING (Donahue) — A large, strong pure white -----	\$0.50
ELEANOR ROOSEVELT (Sass-McDade) —A deep fluorite purple self -----	\$0.25	SANGREAL (J. Sass)—A chrome and citron yellow -----	\$0.25
		SOUTHLAND (Sass)—A good golden-yellow intermediate -----	\$0.25

DWARF BEARDED IRISES

Shipment after July 1st

BRIDE —6 in. Free blooming creamy-white	\$0.25
CITREA —6 in. A good lemon-yellow	\$0.25
CYANEA —6 in. A rich crimson-purple	\$0.25
DR. MANN —6 in. Soft gray-violet standards, smoky-purple falls	\$0.25
FAIRY —A very pale blue	\$0.25
FLORIDA —6 in. A clean pale yellow	\$0.25
LADDIE BOY —8 in. A velvety deep blue. Free bloomer	\$0.25
LT. DE CHAVAGNAC —10 in. A violet purple. A fall bloomer. A border iris	\$0.30

MAROCAIN —10 in. A deep, rich pansy-purple. A border iris	\$0.25
MIST O' PINK (Hill)—Misty red pink with slender stems and extended falls	\$1.00
ROSE MIST —10 in. A soft rosy-mauve. A border iris	\$0.25
SCHNEEKUPPE —10 in. Snow white with green flush. White beard. A border iris	\$0.25
VILLEREAL —8 in. A deep old rose	\$0.35
YELLOW FRILLS —10 in. Free blooming frilled yellow. Fall bloomer. A border iris	\$0.30
ZWANNENBURG —10 in. A cream and maroon. A border iris	\$0.25

SPURIA IRIS

Spurias will be shipped only in the fall at the proper planting time. In planting them be sure to cover rhizomes three to four inches.

BRONZE SPUR —Well named for color, strong	\$2.00
CLARET CUP (Hill)—Not a real Spuria, but a Kermesina seedling, claret wine with some white, vigorous	\$1.00
FIFTH SYMPHONY (Nies) — A very decorative spuria of deep yellow veined with a golden brown throughout, creating an almost orange effect. Fine for flower arrangements	\$2.00
GOLD NUGGET (Milliken)—4 ft. Very popular free-flowering bright yellow.	\$1.00

LORD WOLSELEY — Deep blue-purple with yellow signal patch	\$1.00
MICHIGAN STATE (Nies)—Huge-rounded brown	\$3.00
MRS. TAIT —Exquisite soft porcelain blue with yellow signal patch	\$1.00
RUSSET FLAME —Bronze and red	\$5.00
SAUGATUCK (Nies)—Lavender yellow and bronze	\$3.00
SHELFORD GIANT —Large, tall cream	\$1.00
SUNNY DAY (Sass) — Brilliant golden yellow	\$1.00

BORDER IRIS

DOXA —Light olive grey with darker flush in the centers. Very large perfectly formed flowers of softest color.	\$0.40
GOLDEN BOW —Deepest golden yellow. Wonderful form and substance.	\$0.40
FRISCOETTE (Hill 1946) — So named because it is in color a miniature San Francisco, a dainty plicata, neat flowers on wiry stems, 25 inches	\$1.00

PALTEC —10 in. From the roof iris, pure pale blue. A border iris	\$0.50
PESHAWAR —This glowing rich brown purple is such a color gem and so perfect in garden performance that it deserves as high rank in this class as El-mohr in the tall class	\$0.50

LOUISIANA IRIS

CAJAN—Vivid coppery red that fairly blazes in the garden. Flowers are not large but there are lots of them on well branched stems. Strong grower and rapid increaser. 2½ feet. ----- **\$2.50**

CAJAN JOYEUSE (Thomas Geo. 1943)—The large flowers open deep brilliant rose, gradually lightening to bright rose pink. It blooms very freely over a period of several weeks. One of the brightest. 30 in. ----- **\$3.00**

VINICOLOR—Attractive wine red flowers on well branched 3½ foot stems. Strong grower and a reliable bloomer. ----- **\$1.00**

VIOLACEA—Large 5 inch flower of deep vivid blue with prominent gold crests. One of the richest and most colorful in our list. 3 feet. ----- **\$1.50**

MISCELLANEOUS IRIS SPECIES

CRISTATA (Evansia)—Delightful little crested iris of light blue and gold. Sun or semi-shade. 4 inches ----- **\$0.50**

DICHOTOMA—Only member of the Pardanthopsis Section. The flowers are comparatively small but they bloom profusely on branched 3 foot stems for many weeks in August and September. Color varies from pale to deep lavender. Easy in any soil ----- **\$0.50**

DORTHEA K. WILLIAMSON—One of the older hybrids from a cross between fulva and foliosa. Small deep velvety purple flowers of wonderful substance on 15 inch procumbent stems. Unexcelled for cutting ----- **\$0.60**

MARY LOVE (Washington) — Strong growing lavender pink ----- **\$1.00**

HYACINTHIANA—Ensata type. Most charming creamy white flowers penciled blue. Must be established before blooming well and is then very drouth resistant. Sun. 6-8 inches. **50c; 3 for \$1.00**

PSEUDACORUS—Bright yellow species with splendid foilage similar to Japanese varieties. Thrives in boggy locations. 36 inches ----- **\$0.35**

JAPANESE (IRIS Kaempferi)

CULTURE—Like most azaleas and rhododendrons these iris will not tolerate lime in any form. For best results heavily enriched soil and abundant moisture are necessary. After blooming they require no more moisture than other perennials. An ideal location is along the banks of a stream or pond. They are successfully grown in most parts of the country and do especially well in the Atlantic and Pacific states and the southern borders of the Great Lakes. Plant so that the crowns are about 2 inches below the ground surface. Do not expect typical flowers until the second year as they take more time to become established than bearded iris. In dry climates we cannot stress too strongly the importance of constant moisture during their growing season. In fact, if your water supply is unlimited select a location where you can flood the plants often and you will be rewarded with larger flowers. Any well rotted manure is the best fertilizer. If your soil is alkaline, the addition of aluminum sulphate, peat moss or oak leaf mold will produce the correct soil condition. If the leaves turn yellow, lime very likely is present

and LIME is FATAL to these iris. Best planted in full sun except in warm sections of the country where afternoon shade will prove beneficial. Keep away from foundations, sidewalks, walls or any place where lime can reach. Shipment Sept. 1st.

BLUE BIRD—A very lovely large single of very bright blue with a touch of magenta that brings the color out, making it very outstanding. ----- **\$0.65**

CATHERINE PERRY—Large, ruffled and tufted medium blue blooms. **\$0.75**

CHUTSI—A very large violet single with white veining at center. ---- **\$0.75**

CHUTSI—A very large violet single with white veining at center. ---- **\$0.75**

KAGARI-BI—A large, light red of unique shade. Lighter veining and lighter edges. ----- **\$0.65**

KOKI-NO-IRO—Huge double to triple flowers of deep rich royal purple. Very brilliant and colorful. ----- **\$0.75**

MAHOGANY—A very double, deep mahogany-red. Stock always scarce. ----- **\$0.75**

MARGARET HENDRIKSON — Very large, double to triple flowers of medium blue with tufted center. ----- **\$1.00**
MOMI-NO-TAKI—A huge early flowering double dark reddish-purple with a golden center. ----- **\$0.75**
MRS. GEO. STUMPP—Immense white falls and small mauve-rose standards, a very fascinating single. ----- **\$0.65**
LIGHT IN OPAL — Gorgeous orchid-pink enhanced by blue halo in center. A masterpiece and a very rare color. Large double bloom. ----- **\$1.50**
LA FAVORITE—A very lovely large freely veined white with a yellow signal patch, white styles. Single. ---- **\$0.65**
PATROCLE — A superb dark violet single. ----- **\$0.65**
PINK PEARL—A favorite pink that is slightly deeper in color than Light in Opal but with the same blue halo. **\$1.50**

PURPLE AND GOLD—A large, double rich violet-purple with white petaloids that are tipped violet, bright golden center. ----- **\$0.65**

RED RIDINGHOOD — A very large single of deep old rose or hollyhock red. A wonderful garden color. ----- **\$0.55**

ROSE ANNA—This very large double flower is mauve or rosy lavender, veined deep purple. Bright purple styles and large yellow spears. ----- **\$0.75**

UCHIU—A large flaring double of deep sky blue with white veining. A delightful flower. ----- **\$1.00**

WAKI HEGI—A rare and most beautiful variety. A huge very double intensely ruffled flower of light blue with pronounced darker veining and a brilliant purple tufted center. One of the last to bloom. ----- **\$1.00**

THE SIBERIANS

CULTURE—**SIBERIAN** and **SPURIA IRIS** will grow and bloom in almost any soil that suits other perennial flowers. However, they are moisture lovers and will grow twice as high and produce twice as many flowers if kept constantly moist during their growing season. As they are most effective in large clumps they should be planted where they need not be disturbed. All are very hardy and should give no trouble anywhere.

Shipment Star's Sept. 1st

ACUTA—36 in. A dwarf blue -- **\$0.40**
AMELIA EARHEART — 42 in. Blue with white blotch ----- **\$0.50**
BLUE CHARM—30 in. Large bright blue ----- **\$0.40**
BLUE OWL—36 in. A very rich and lustrous blue with a prominent bronze throat ----- **\$0.75**
BLUE RIDGE—Blue with a turquoise center ----- **\$0.50**
BLUE STAR—A star shaped blue **\$0.40**
BOB WHITE—28 in. Waxy snow white ----- **\$0.40**
BUTTER FLY—36 in. Soft blue flushed white ----- **\$0.40**
CAESAR—30 in. Very dark blue amaranth ----- **\$0.50**
CAESAR'S BROTHER—48 in. One of the finest dark varieties, an intense velvety blue ----- **\$0.75**

CHAUDIERE—A light blue ----- **\$0.75**

COREANA — 32 in. Soft lavender species ----- **\$0.50**

DRAGONFLY—58 in. A fine strong growing extra tall flower of bluish-violet with a bronze throat. Tallest Siberian ----- **\$0.40**

ERIC THE RED—42 inch. Extremely large, brilliant red. Well branched and free flowering ----- **\$3.00**

GATINEAU—36 in. A sturdy stemmed clear white ----- **\$0.60**

GAYHEART—A late dark blue -- **\$0.40**

GEO. WALLACE—46 in. First to bloom. Red purple standards with dark blue falls ----- **\$0.40**

GRAY DOVE—38 in. Charming soft gray-blue with lavender shadings. Excellent wisteria colored bloom --- **\$0.75**

GRAY PRINCE—36 in. Rare soft gray-blue with rusty purple venation on cream-tan haft ----- **\$0.75**

HEAVENLY BLUE—48 in. Gorgeous heavenly blue ----- **\$0.50**

HELEN ASTOR—30 in. Well rounded rosy red with halo near throat of falls ----- **\$1.00**

KINGFISHER BLUE—42 in. A fine large bright uniform sky blue. One of the best ----- **\$0.50**

LADY NORCLIFFE—38 in. A stylish deep bright violet with white veined throat ----- **\$0.50**

LLEWELLYN —42 in. A lovely soft blue -----	\$0.50	SKEENA —A late dwarf in dark blue -----	\$0.50
MATANE —30 in. A milk white with crinkled edges -----	\$0.75	SKYLARK —40 in. Exquisite soft blue -----	\$0.40
MAY MORNING —32 in. An early gigantic blue-purple -----	\$1.00	SKY ROCKET —An early choice violet -----	\$0.40
MILDRED STAHLMAN —A charming pale china blue of large size with horizontal falls -----	\$1.00	SNOW CREST —36 in. A very lovely frilled white -----	\$0.75
MORNING MAGIC —36 in. An early bloom of soft pink tones -----	\$1.00	SNOW QUEEN —38 in. Snowy white of firm waxy texture. A. M. -----	\$0.50
MOUNTAIN POOL —Beautiful clear sky blue with smoothly finished flowers. Very outstanding -----	\$1.00	STAR DUST —A late tall white --	\$1.00
MRS. ROWE —32 in. A silvery white flushed rose -----	\$0.75	SUMMER SKY —32 in. Reverse coloring. Standards, blue falls, white -----	\$1.00
NIPOGON —32 in. A clear blue with drooping falls -----	\$0.75	THELMA PERRY —An improved perry blue -----	\$0.40
OTTAWA —28 in. A very bright dark blue with wide white patch with blue veining on hamt. A. M. -----	\$0.75	THELMA PERRY —An improved perry blue -----	\$0.40
PAPILON —50 in. A very soft blue -----	\$0.40	TRUE BLUE —36 in. A magnificent true blue -----	\$0.50
PERIWINKLE —40 in. Medium clear deep blue -----	\$0.50	TURQUOIS CUP —42 in. A very nice turquoise-blue -----	\$0.50
PERRY'S BLUE —46 in. A very beautiful shade of clear sky blue. A. M. -----	\$0.40	TOWANDA RED FLARE —The very latest red between Helen Astor and Eric the Red in tone. Very large and flaring with wide segments -----	\$2.50
RED EMPEROR —30 in. A lovely wine-red -----	\$0.50	WHITE DOVE —48 in. A pure white -----	\$0.50
RIMOUSKI —30 in. Early white with lovely yellow halo -----	\$0.75	WHITE WAY —The purest white to date -----	\$0.50
SILVER TIP —34 in. A ruffled azure blue -----	\$0.50	ZEST —34 in. A very brilliant iridescent dark blue with lavender rose styles -----	\$1.00

HOSTAS OR PLANTAIN LILIES

The Hostas are excellent for edging borders, mass planting or in front of shrubbery. If you have a shady spot under trees that seems devoid of interest, then by all means try some of these interesting plants for they are at their best grown in such a location where their large sturdy leaves seem almost tropical in growth and very decorative. The racemes of bell like flowers of lilac, blue lavender, and white rise well above the foliage.

Shipment Early Spring or Early Fall

CAERULEA—The true variety has the bluest flowers of any of the Hostas. It is the next largest in size of flower to *H. plantaginea* with very round puffed out bells of lavender blue distinctly penciled on the inner surface with deeper color. The leaves are glossy green of large size and graceful form. Use for border planting with pale yellow *Hemerocallis* in the background. July-August. 3 ft. -----

\$0.50

HOSTA DECORATA—The blunt plantain-lily has blunt dark green leaves with white edges. The leaves are about one foot high and the blade about five inches by three inches. In a couple of years a small plant makes a rosette of leaves two feet across. This rosette of leaves of green and white coloring forms an excellent end for a flower bed against a lawn as the outer leaves bend to the ground. The flowers, in the early part of August, are fat bells standing out at right angles on a two-foot stalk. The blossoms of purple have lines of white, so that the effect is not a solid color. There is a sturdy, substantial feeling to this plant. Formerly listed as Thomas Hogg ----- **\$0.50**

ERROMENA — This Hosta has been identified through illustrations and description in "Bailey Herbarum" as Hosta Erromena. Listed and sold also under names Japonica, and Lancifolia Undulata. It is a robust growing plant with dark green leaves with prominent curved veins either side of midrib, blade of leaf about 8 to 10 inches long, about 4 inches broad. Flowers pale lilac bells on stalks 2½ feet tall, blooms in July ----- **\$0.75**

FORTUNEI—A very fine outstanding species with good size glaucous leaves. Makes a fine specimen plant. Foliage not quite as large and more pointed than Seiboldiana. Lavender blue bell shaped flowers on stems 2 ft. or more in July. ----- **\$0.75**

LANCIFOLIA FORTIS — Lance leaf plantain lily. Long lance like foliage, dark green in color, produced in abundance. Flowers are violet. Bloom September and October on stems two feet tall, very floriferous and especially welcome as it is in bloom over a long period in the fall when flowers are scarce. **\$0.40**

SUBCORDATA GRANDIFLORA — Also listed as Plantaginea. Large yellowish green leaves on long stems. Largest blooms of all Hosta. Pure white, lily-like in form. In bloom August-September. 24 inches ----- **\$0.50**

UNDULATA VARIEGATA — This plant has more white in foliage and leaves are more wavy than preceding variety. Blooms in July. Lavender blossoms ----- **\$0.75**

MISCELLANEOUS

A NEW SHASTA DAISY

Shipment—May or September

We have imported from Canada a new Shasta Daisy (Wirral Pride). Clean white flowers up to four inches across, start blooming in July. The full anemone center makes this a garden attraction. It has withstood weather of 14° below. Our supply is limited but while they last ----- **Each \$0.75**

LIATRIS (Gayfeather)

This fine spire-like perennial blooms in midsummer. It is showy in the garden and excellent for cutting. Grows easily in common garden soil in full sun or part shade.

PYCNOTACHYA—4 ft. The tall spikes of rich purple are outstanding in the summer garden. July-August. **\$0.35**

SEPTEMBER GLORY — 6 ft. Giant spikes of rosy purple flowers, making a splendid effect. September. ----- **\$0.50**

SPICATA—3 ft. Similar to L. pycnostachya but earlier to bloom ----- **\$0.35**

PLATYCODON (Balloon-Flower)

Dependable, hardy plants giving a wealth of bloom for a long time during the summer, when color is most needed

in the garden. They are easily grown in any average soil. Full sun is preferred, but they will do fairly well in part shade.

3 Outstanding New Balloon-Flowers

NEW SHELL-PINK—18 in. Distinctive pale pink flowers. Blooms freely all summer.

DOUBLE WHITE — Beautiful double blooms on 18 to 24-inch plants. Excellent for cut flowers and for garden decoration.

DOUBLE BLUE—A good companion for Double White.

Each \$0.50; all three \$1.25

CANNAS

PRESIDENT—Extremely large, bright red flowers on dwarf plant. Very popular.

CITY OF PORTLAND—Very large pink flowers on medium plant.

RICHARD WALLACE—Large solid yellow flowers on dwarf plant.

ROSEMOND COLE—A medium growing large flowered red with petals edged in gold.

WYOMING—A very large orchid flowering dark orange. Medium plants.

Any above variety ----- Each \$0.15

TERMS OF SALE

All orders filled in rotation as received and in case of stock depletion we would appreciate you advising us on whether duplication can be made. Cash refund on shortages otherwise.

No C. O. D. orders will be accepted. Cash with order please. We advise the use of money orders or checks as cash in the mails is always hazardous. We pay the postage on orders of \$3.00 or more, otherwise add 35c to cover cost of packing and transportation. Kansas residents add 2% of total for sales tax as required by law. If you reside beyond Zone 4 suggest the use of AIR MAIL for mums. Consult your postmaster on rates and if your order exceeds \$3.00 you may deduct 25 cents from your AIR MAIL costs. Compute 1 to 12 plants per pound. All mums are sent insured so be sure to register complaint with your postmaster if plants arrive unsatisfactorily. All complaints must be received by us within 15 days of receipt of stock.

OUR GUARANTEE—We guaranteed all stock to be state inspected and free from insects and disease and to be true to name. We also guarantee all stock to be received by you in good condition and true to name. If found otherwise we will refund the amount paid for said stock on proper proof of error on our part. We give no warranty expressed or implied, and can be in no way responsible for the crop.

With the cost of everything on the upward trend we were forced to raise our prices slightly but to put things on a fairly level keel we offer a liberal cash discount on the total order. You can figure what the cost of each plant is for your own information.

If your order totals—

\$ 3.00 to \$10.00	deduct 10%
\$10.50 to \$15.00	deduct 15%
\$15.50 to \$25.00	deduct 20%
\$25.50 and up	deduct 25%

We are members of A. I. S.-K. C. I. S., National Chrysanthemum Society, The Portland Chrysanthemum Society and The National Hemerocallis Society. Visitors are always welcome at our gardens. Drive ½ mile west of 69 Highway on 75th St. to Hardy Street and three blocks south.

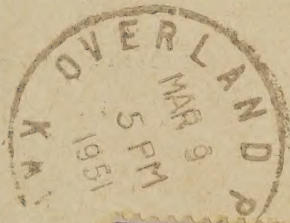
Shoemaker's Gardens

OVERLAND PARK, KANS.



Return Postage Guaranteed

Dept. of Agriculture
Library.
Washington,
D.C.



Sec. 34.66 P. L. & R.